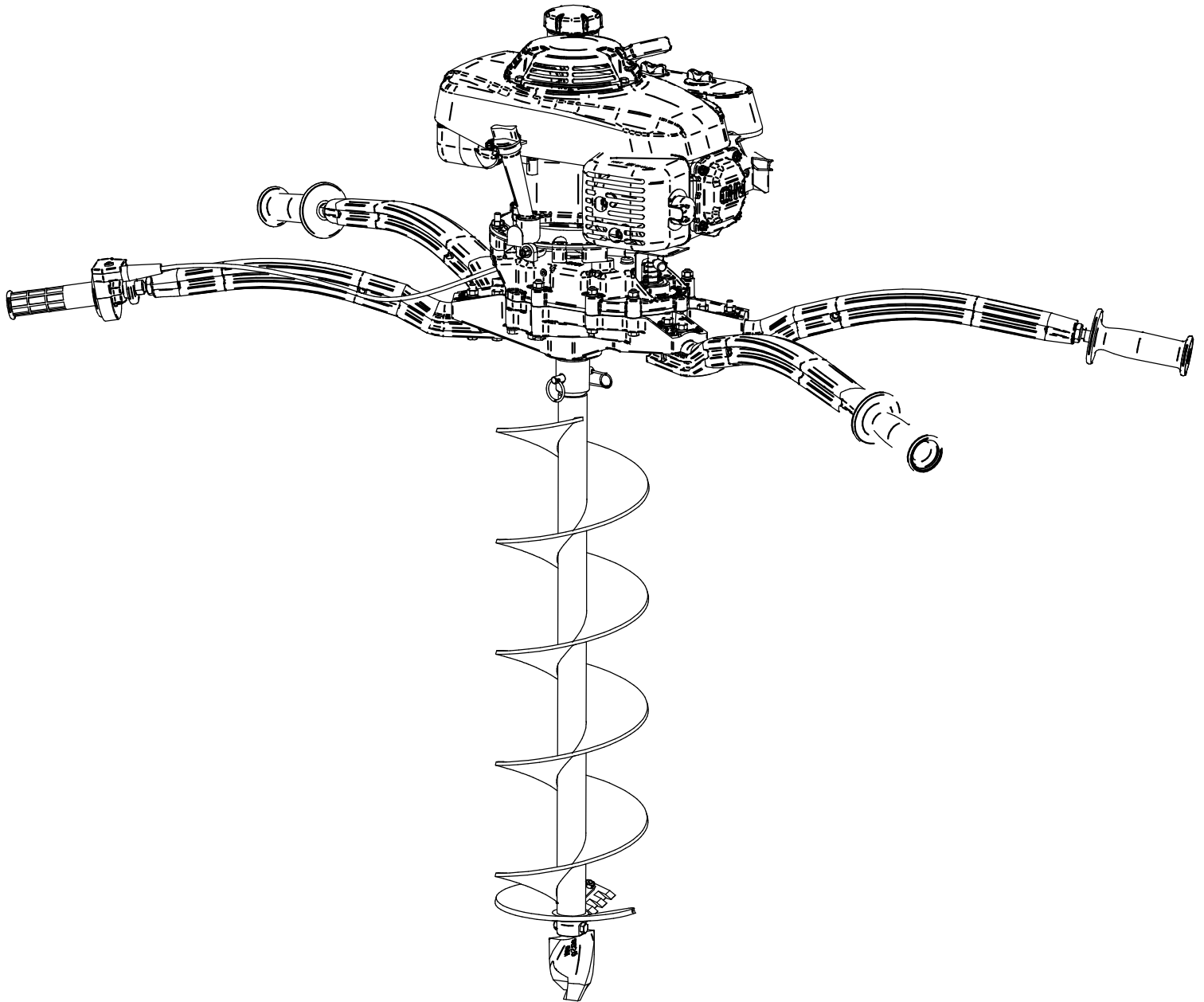
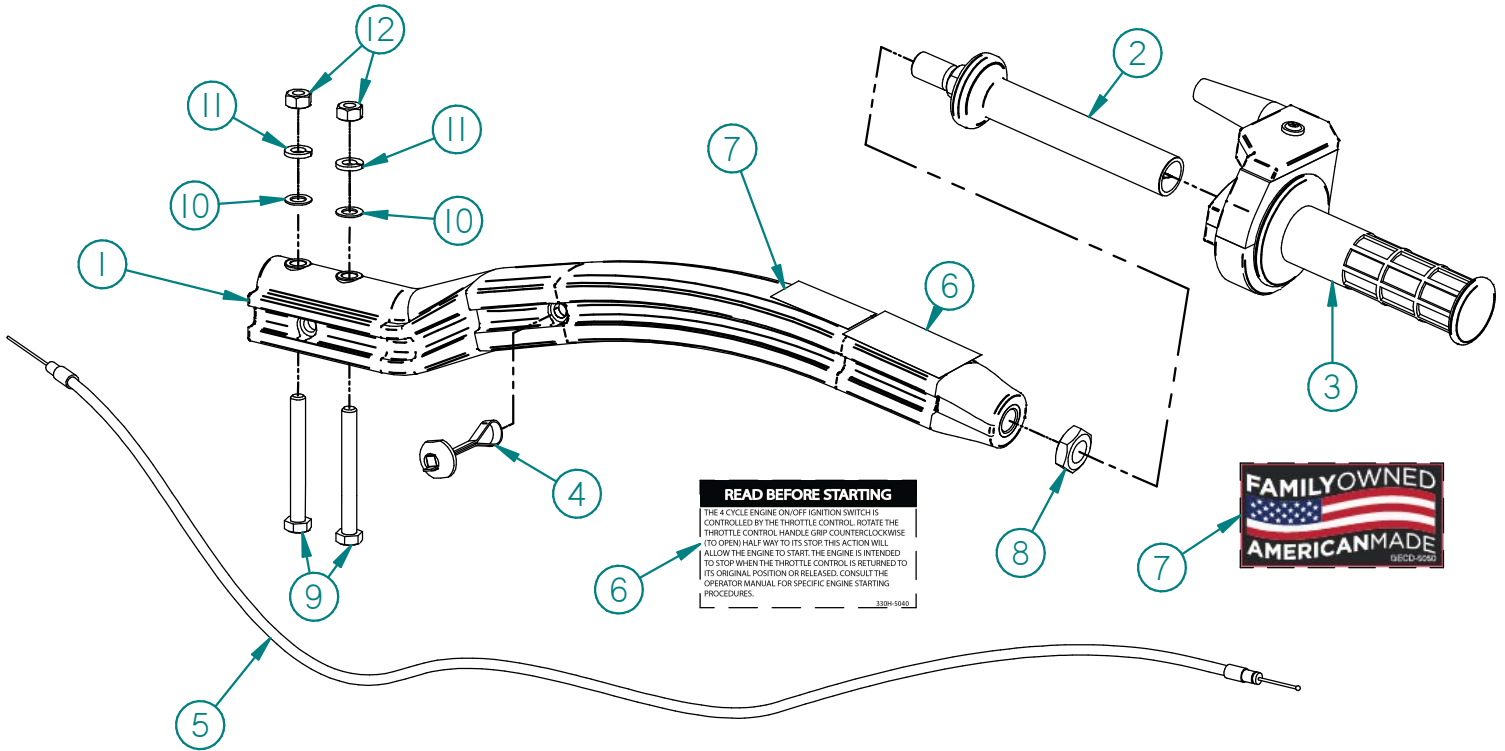


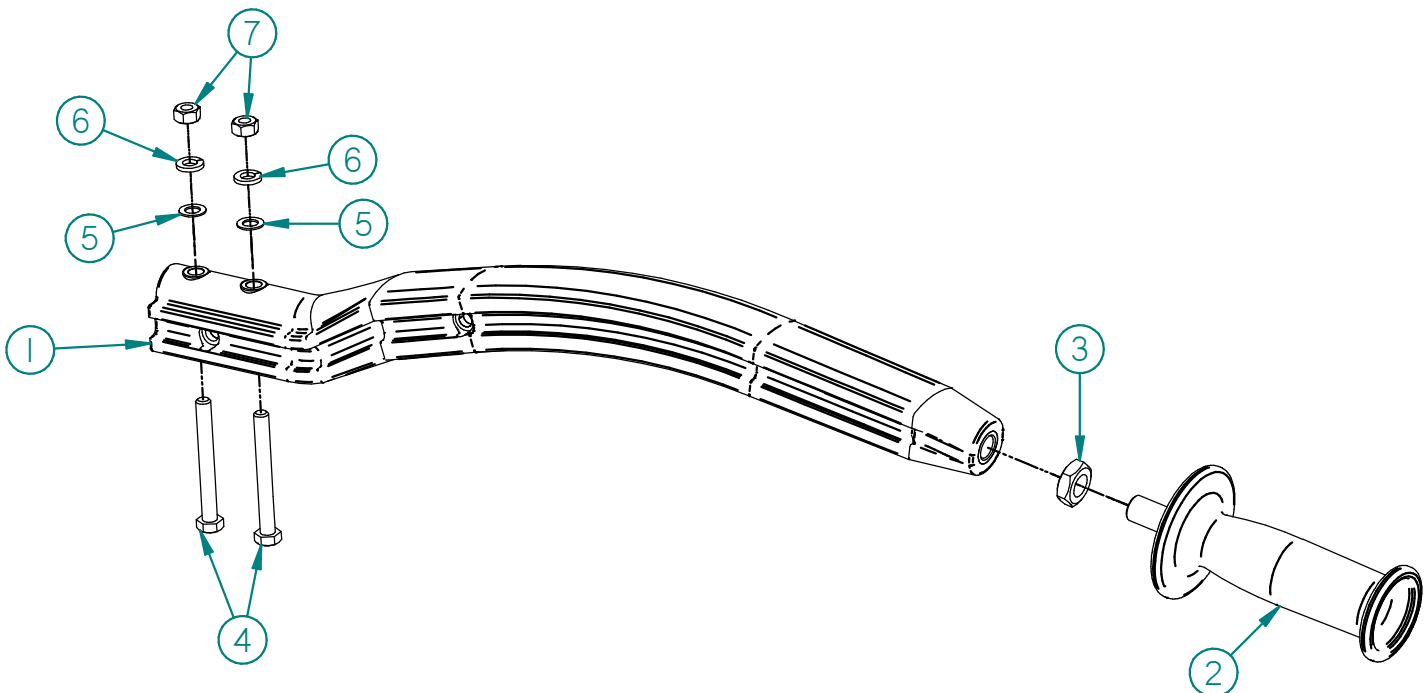
*Replacement Parts Diagram
262H Hole Digger
Equipped With Honda GXV160 Engine*



*Replacement Parts Diagram
Throttle Handle Assembly
262H Hole Digger
[Beginning with Serial Number 174809]*



*Replacement Parts Diagram
Operator Handle Assembly
262H Hole Digger
[Beginning with Serial Number 174809]*



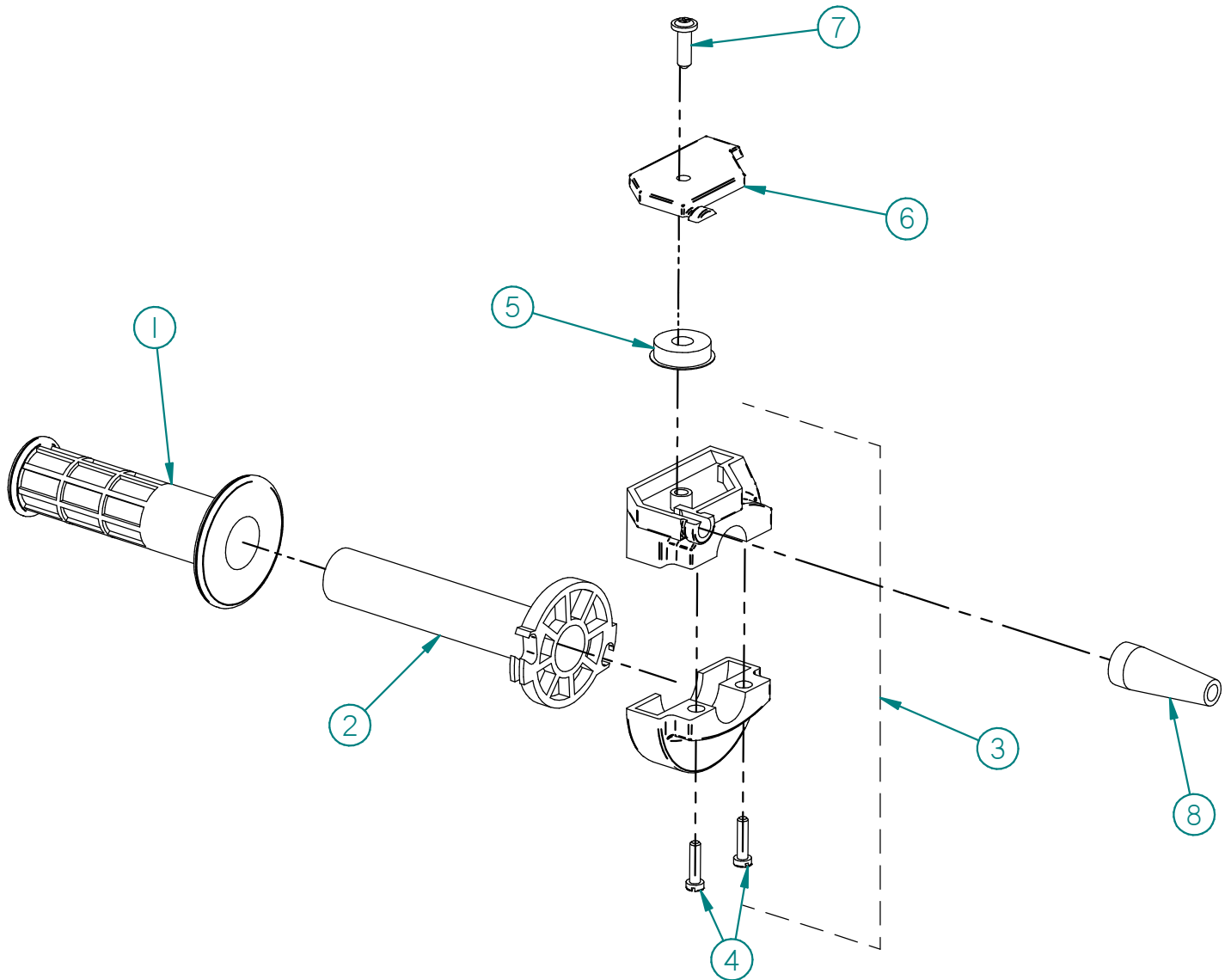
*Replacement Parts Diagram
Throttle Handle Assembly
262H Hole Digger
[Beginning with Serial Number 174809]*

| Reference Number | Part Number | Description | Quantity |
|------------------|--------------|-------------------------------|----------|
| 1 | 235-0150 | Handle, Throttle | 1 |
| 2 | 235-0250 | Grip, Handle, Throttle | 1 |
| 3 | 310-0030 | Assembly, Control, Throttle | 1 |
| 4 | 235-0370 | Tie, Cable, Throttle | 1 |
| 5 | 310-0081PAK2 | Pak2, Assy, Cable, Throttle | 1 |
| 6 | 330H-5040 | Decal, Ignition | 1 |
| 7 | GECD-5050 | Decal, Family Owned, American | 1 |
| 8 | 40090001 | Nut, Jam, Hex, 9/16-18, ZY | 1 |
| 9 | 15052200 | HHCS, 5/16-18 X 2-3/4, ZY | 2 |
| 10 | AN-960-516L | Washer, Flat, 5/16, ZY | 2 |
| 11 | 16050000 | Washer, Lock, 5/16, ZY | 2 |
| 12 | 18050000 | Nut, Hex, 5/16-18, ZY | 2 |

*Replacement Parts Diagram
Operator Handle Assembly
262H Hole Digger
[Beginning with Serial Number 174809]*

| Reference Number | Part Number | Description | Quantity |
|------------------|-------------|----------------------------|----------|
| 1 | 235-0090 | Handle, Operator | 1 |
| 2 | 235-0240 | Grip, Handle, Operator | 1 |
| 3 | 40090001 | Nut, Jam, Hex, 9/16-18, ZY | 1 |
| 4 | 15052200 | HHCS, 5/16-18 X 2-3/4, ZY | 2 |
| 5 | AN-960-516L | Washer, Flat, 5/16, ZY | 2 |
| 6 | 16050000 | Washer, Lock, 5/16, ZY | 2 |
| 7 | 18050000 | Nut, Hex, 5/16-18, ZY | 2 |

Replacement Parts Diagram
PN: 310-0030 Throttle Control Assembly
For Use With
200 Series Hole Diggers



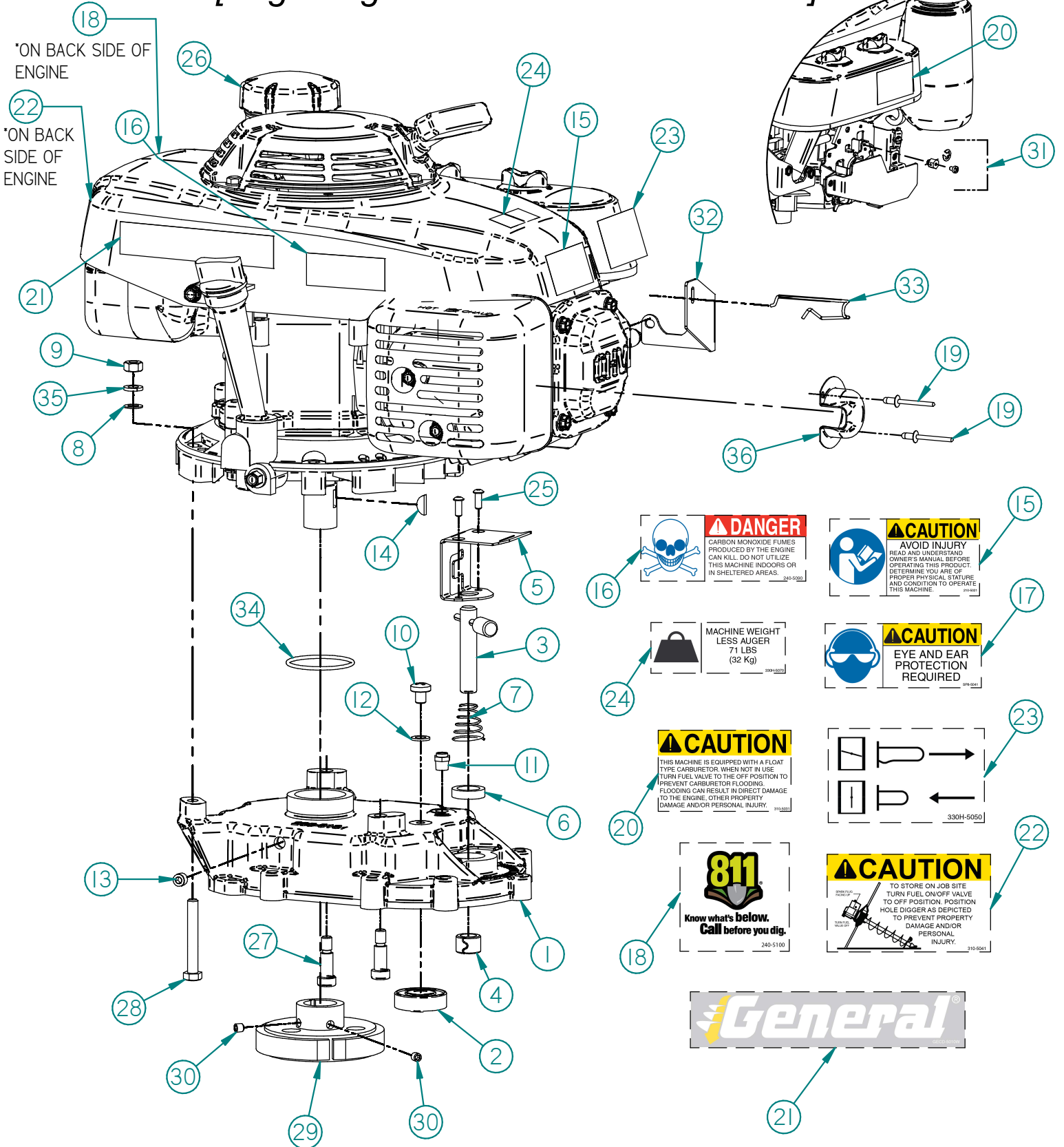
| Reference Number | Part Number | Description | Quantity |
|------------------|----------------|--|----------|
| 1 | 310-0020-030 | Grip, Throttle | 1 |
| 2 | 310-0030-020-A | Tube, Throttle, W/Grip, (Includes Reference 1) | 1 |
| 3 | 310-0030-010-A | Assembly, Body, W/Screws, (Includes Reference 4) | 1 |
| 4 | 310-0030-040 | Screw, Cheesehead, M5-.8 X 20 | 2 |
| 5 | 310-0030-070 | Sheave, Roller | 1 |
| 6 | 310-0030-060 | Cover, Top | 1 |
| 7 | 310-0030-050 | Screw, Self-Tapping | 1 |
| 8 | 310-0020-080 | Boot, Rubber | 1 |

Replacement Parts Diagram

Cover Assembly

M262H Hole Digger

[Beginning with Serial Number 174809]



*ON BACK SIDE OF ENGINE
 *ON BACK SIDE OF ENGINE

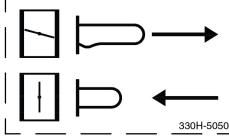
⚠ DANGER
 CARBON MONOXIDE FUMES PRODUCED BY THE ENGINE CAN KILL. DO NOT UTILIZE THIS MACHINE INDOORS OR IN SHELTERED AREAS. 240-9020

⚠ CAUTION
 AVOID INJURY
 READ AND UNDERSTAND OWNERS MANUAL BEFORE OPERATING THIS PRODUCT. DETERMINE YOU ARE OF PROPER PHYSICAL STATURE AND CONDITION TO OPERATE THIS MACHINE. 499991

MACHINE WEIGHT
 LESS AUGER
 71 LBS
 (32 Kg) 109914001

⚠ CAUTION
 EYE AND EAR PROTECTION REQUIRED 099 0041

⚠ CAUTION
 THIS MACHINE IS EQUIPPED WITH A FLOAT TYPE CARBURETOR. WHEN NOT IN USE, TURN FUEL VALVE TO THE OFF POSITION TO PREVENT CARBURETOR FLOODING. FLOODING CAN RESULT IN DIRECT DAMAGE TO THE ENGINE, OTHER PROPERTY DAMAGE AND/OR PERSONAL INJURY. 310303



811
 Know what's below.
 Call before you dig.
 240-5100

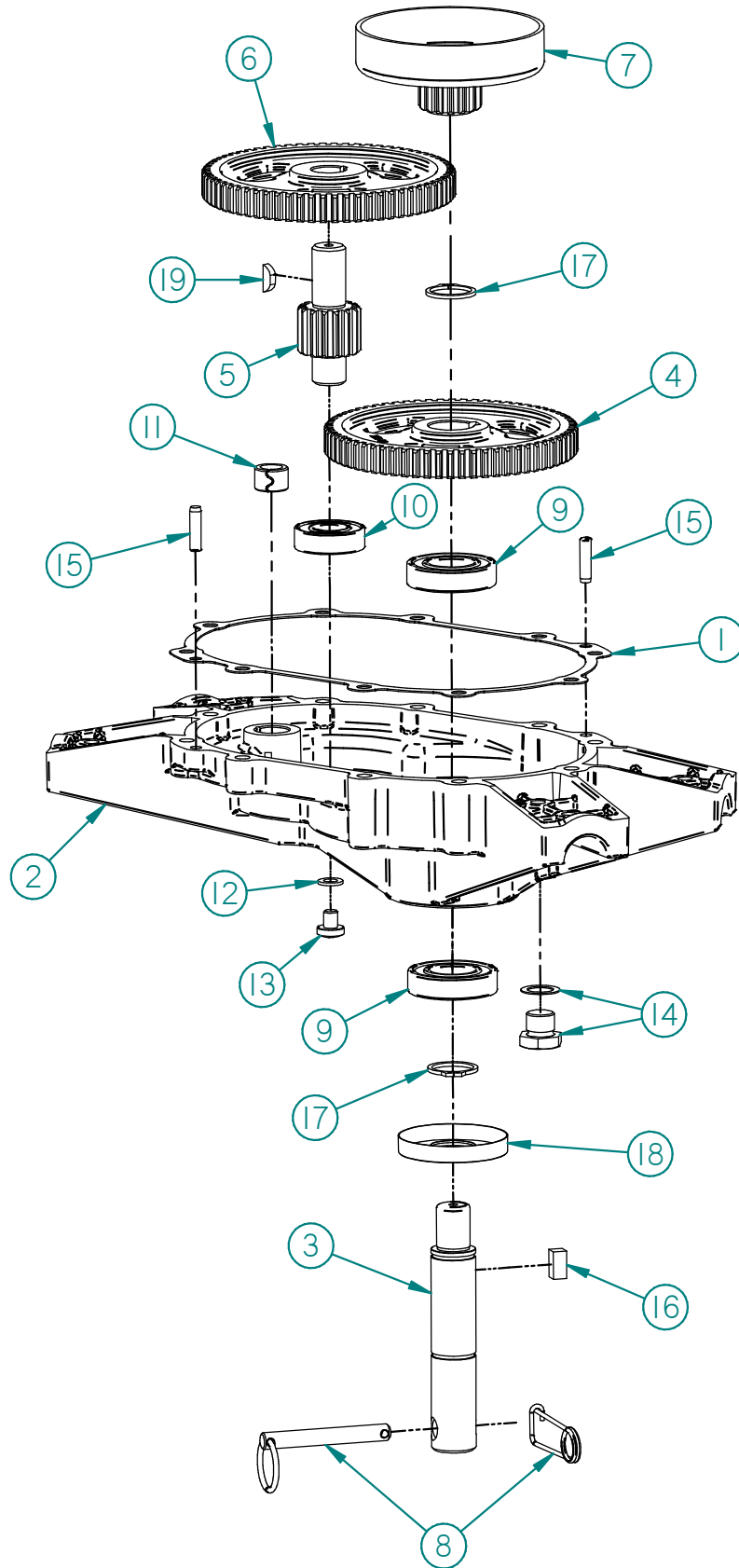
⚠ CAUTION
 TO STORE ON JOB SITE, TURN FUEL ON/OFF VALVE TO OFF POSITION. POSITION HOLE DIGGER AS DEPICTED TO PREVENT PROPERTY DAMAGE AND/OR PERSONAL INJURY. 210-9041



*Replacement Parts Diagram
Cover Assembly
M262H Hole Digger
[Beginning with Serial Number 174809]*

| Reference Number | Part Number | Description | Quantity |
|------------------|-------------------|--|----------|
| 1 | 235-0131A | Assembly, Cover, Transmission, (Includes Ref. 2 & 4) | 1 |
| 2 | 6203-2RS-12 | Bearing, Ball | 1 |
| 3 | 235-0220 | Assembly, Pin, Lock | 1 |
| 4 | 235-0140 | Bushing, Spring-Type | 1 |
| 5 | 235-0230 | Plate, Pin, Lock | 1 |
| 6 | 471442 | Seal, Oil | 1 |
| 7 | 235-0110 | Spring, Pin, Lock | 1 |
| 8 | AN-960-516L | Washer, Flat, 5/16, ZY | 1 |
| 9 | 18050000 | Nut, Hex, 5/16-18, ZY | 1 |
| 10 | 37050300 | PHMS, 5/16-18 X 3/8, ZY | 1 |
| 11 | 5677 | Valve, Relief | 1 |
| 12 | 330H-0200 | Washer, Nylon | 1 |
| 13 | 74020201 | Plug, PTF, 1/8-27 | 1 |
| 14 | 6 | Key, Woodruff, 5/32 X 5/8 | 1 |
| 15 | 210-5021 | Decal, Caution, Avoid Injury | 1 |
| 16 | 240-5090 | Decal, Danger | 1 |
| 17 | SP8-5041 | Decal, Caution, Eye/Ear | 1 |
| 18 | 240-5100 | Decal, 811 | 1 |
| 19 | 46030100 | Rivet, Pop, 3/16 X 1/8, SS | 2 |
| 20 | 310-5031 | Decal, Carb Off | 1 |
| 21 | GECD-5010W | Decal, General, 1.00H X 5.25L | 1 |
| 22 | 310-5041 | Decal, Caution, Storage | 1 |
| 23 | 330H-5050 | Decal, Choke | 1 |
| 24 | 235-5010 | Decal, Weight | 1 |
| 25 | 55030400 | BHSCS, #10-24 X 1/2, ZY | 2 |
| 26 | GXV160UH2N5AH-BLK | Engine, Honda, GXV160 | 1 |
| 27 | 62060601 | Bolt, Shoulder, 3/8 X 3/4 | 2 |
| 28 | 60052000 | SHCS, 5/16-18 X 2-1/2, ZY | 1 |
| 29 | 330H-0175 | Assembly, Rotor/Shoe, Clutch, (Includes Ref. 30) | 1 |
| 30 | 31040201 | Screw, Set, 1/4-28 X 1/4, PF | 2 |
| 31 | 330-0320 | Assembly, Swivel | 1 |
| 32 | 17954-ZG9-U80 | Bracket, Choke | 1 |
| 33 | 16611-ZG9-U80 | Rod, Choke | 1 |
| 34 | 330H-0020 | Ring, O Type | 1 |
| 35 | 16050000 | Washer, Lock, 5/16, ZY | 1 |
| 36 | 330H-0040 | Deflector, Exhaust, GXV160 | 1 |

*Replacement Parts Diagram
Transmission Case Assembly
262H Hole Digger
[Beginning with Serial Number 174809]*



*Replacement Parts Diagram
Transmission Case Assembly
262H Hole Digger
[Beginning with Serial Number 174809]*

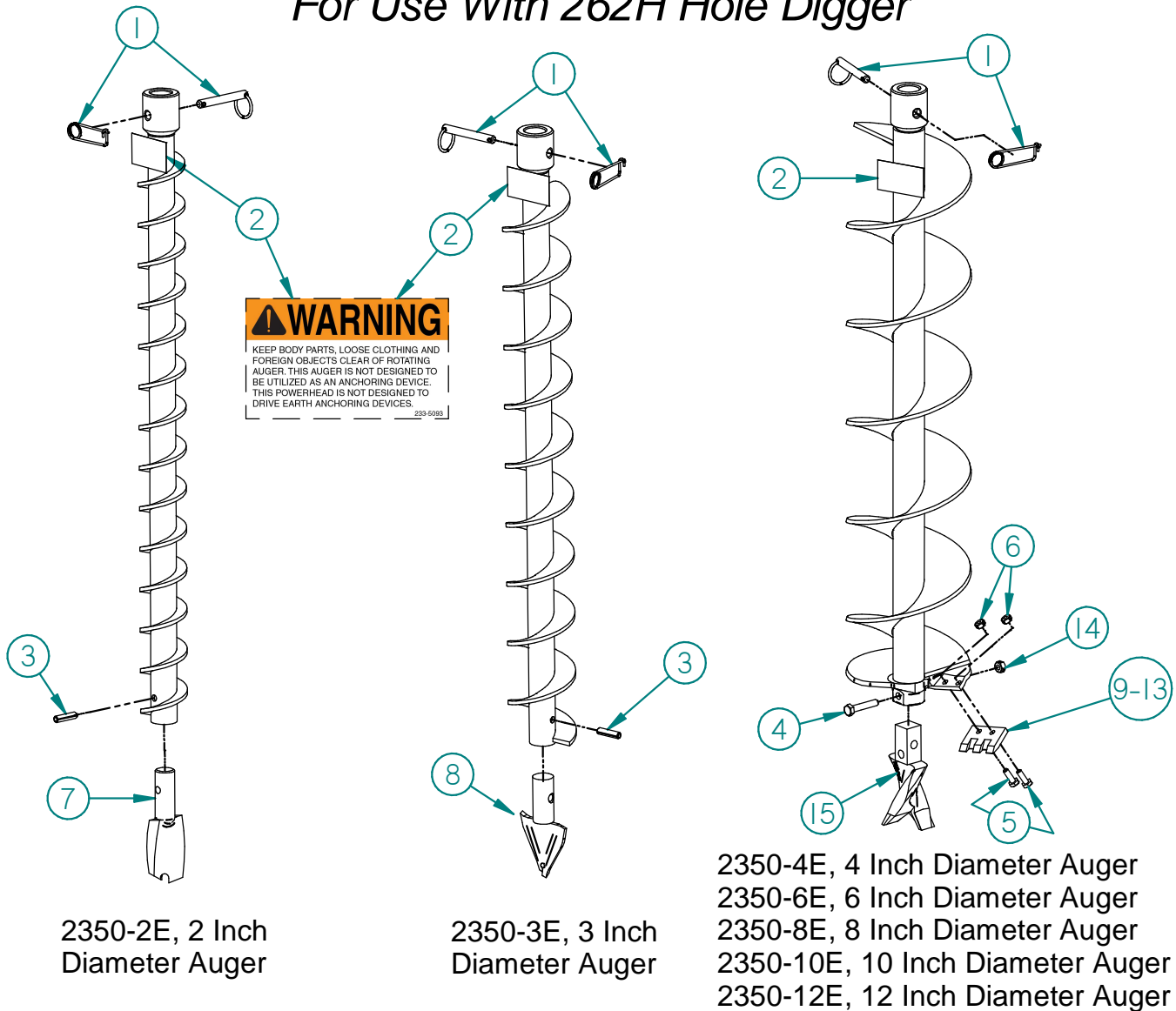
| Reference Number | Part Number | Description | Quantity |
|------------------|--------------|--|----------|
| 1 | 235-0100PAK2 | Pak2, Gasket, Transmission | 1 |
| 2 | 235-0120A | Assembly, Case, Transmission, (Includes Ref. 9, 10 & 11) | 1 |
| 3 | 235-0330 | Shaft, Drive, 1D | 1 |
| 4 | 235-0350 | Gear, Secondary | 1 |
| 5 | 235-0310 | Gear, Pinion, Secondary | 1 |
| 6 | 235-0340 | Gear, Primary | 1 |
| 7 | 3516 | Drum, Clutch, W/Pinion | 1 |
| 8 | 2121PAK3 | Pak3, Pin, Auger, .375D | 1 |
| 9 | 99R16 | Bearing, Ball | 2 |
| 10 | 6203-2RS-12 | Bearing, Ball | 1 |
| 11 | 235-0140 | Bushing, Spring-Type | 1 |
| 12 | 330H-0200 | Washer, Nylon | 1 |
| 13 | 37050300 | PHMS, 5/16-18 X 3/8, ZY | 1 |
| 14 | 50100800A | Plug, Drain, Oil, W/Gasket | 1 |
| 15 | 51040800 | Pin, Dowel, 1/4 X 1 | 2 |
| 16 | 63050500 | Key, Square, 5/16 X 5/8 | 1 |
| 17 | 5160-98 | Ring, Snap | 2 |
| 18 | 471516 | Seal, Oil | 1 |
| 19 | 6 | Key, Woodruff, 5/32 X 5/8 | 1 |

Replacement Parts Diagram

2350 Series Augers (2 Thru 12 Inch Diameter)

1 Inch Round Drive Connection

For Use With 262H Hole Digger



| Reference Number | Part Number | Description | Application | Quantity |
|------------------|-------------|---|-----------------------|----------|
| 1 | 2121PAK3 | Pak3, Pin, Auger, .375D | All Augers | 1 |
| 2 | 233-5093 | Decal, Caution, Clear Rotating | All Augers | 1 |
| 3 | 20051000 | Pin, Roll, 5/16 X 1-1/4 | 2350-2E, 2350-3E | 1 |
| 4 | 15051300 | HHCS, 5/16-18 X 1-5/8, ZY | 2350-4E Thru 2350-12E | 1 |
| 5 | 15040600 | HHCS, 1/4-20 X 3/4, ZY | 2350-4E Thru 2350-12E | As Req. |
| 6 | 52040000 | Nut, Lock, 2-Way, 1/4-20, ZY | 2350-4E Thru 2350-12E | As Req. |
| 7 | P801PAK3 | Pak3, Bit, Screw, Auger | 2350-2E | 1 |
| 8 | P302PAK2 | Pak2, Bit, Screw, Auger | 2350-3E | 1 |
| 9 | E244PAK3 | Pak3, Blade, Earth, 4D | 2350-4E | 1 |
| 10 | E246PAK3 | Pak3, Blade, Earth, 6D | 2350-6E | 1 |
| 11 | E248PAK3 | Pak3, Blade, Earth, 8D | 2350-8E | 1 |
| 12 | E310PAK3 | Pak3, Blade, Earth, 10D | 2350-10E | 1 |
| 13 | E512PAK3 | Pak3, Blade, Earth, 12D | 2350-12E | 1 |
| 14 | 52050000 | Nut, Lock, 2-Way, 5/16-18, ZY | 2350-4E Thru 2350-12E | 1 |
| 15 | SB26PAK3 | Pak3, Bit, Screw, Auger, (Includes Ref. 4 & 14) | 2350-4E Thru 2350-12E | 1 |