

GENERAL PURPOSE ENGINE

GX35NT

PARTS CATALOGUE

5

FOREWORD INDEX

1

ENGINE GROUP

2

PART NUMBER INDEX

3

PART NAME INDEX

4

Instruction for use of parts catalogue

- **This parts catalogue was prepared based on the latest information available as of January 10, 2015.**
 - See the parts catalogue news for any revision that is made after January 10, 2015.
- **Always specify the part number when ordering a part.**
 - Check the model, type, serial numbers, color, maker, and the size as needed before ordering a part.
 - Note that the illustrations (part drawings) can differ from the actual parts in shape. They are given just to help you to refer to the parts.
- **When modifications or additions to this parts catalogue are made, a revised edition will be issued at an appropriate time, with successively progressing revision numbers on the cover. We recommend obtaining such revisions in order to keep your parts catalogue up-to-date at all times. To check whether a parts catalogue revision has been issued, please contact your Honda distributor.**

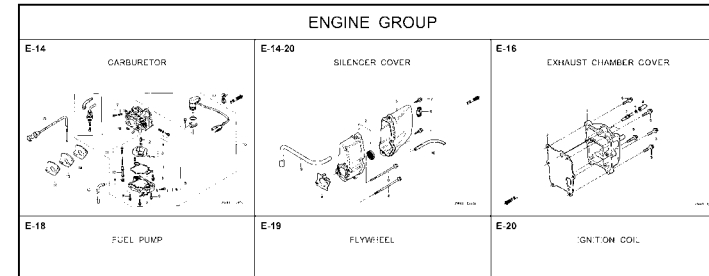
Initial version issue date September 14, 2005
Honda Motor Co., Ltd.

CONTENTS

	Page
● Instruction for use of parts catalogue	1
● How to refer to the part information	2
● Part catalogue structure	3
● When the parts were revised.....	4
● Abbreviations used in the parts catalogue.....	4
● How to check the part block and serial numbers.....	5
● Models, parts catalogue codes and applicable serial numbers.....	6
● Features of each type.....	7
● Fuel hose, general purpose hoses and vinyl hose	8
● Illustrated index	9
● ENGINE GROUP.....	11
● PART NO. INDEX.....	30
● PART NAME INDEX.....	31

How to refer to the part information

A Reference with "Illustrated index"



B Reference with "Part number index"

PART NO. INDEX				
Part Number	Page Ref.	Part Number	Page Ref.	Pi
06000		15212-ZW9-000	49 7	17583
		15220-ZW9-003	49 8	17583
06316-ZW9-000	104 1	15332-ZW9-000	74 2	17611
		15332-ZW9-A30	76 2	17611
11000		15400-PFB-004	46 5	17612
		15422-ZW9-000	49 9	17620
11300-ZW9-000	46 1	15473-881-000	49 10	17620
11300-ZW9-800	46 1	15474-ZW9-000	49 11	17624
11340-ZW9-000	46 2	15611-921-000	45 6	17650
11342-ZW9-000	46 3	15655-ZW9-000	46 6	17650
11381-ZW9-003	47 1			17660
				17661
12000		16000		
		16010-ZV4-005	55 1	17665
12000-ZW9-000ZA	46 4	16011-ZV4-005	55 2	17670
12155-ZV4-A00	48 1	16013-ZW9-003	55 3	17680
12166-ZW9-000	45 1	16016-ZW9-003	55 4	17701
12209-GB4-681	51 1	16016-ZW9-721	55 4	17701
12210-ZW9-000ZA	45 2	16023-ZW9-003	55 5	17701
12216-ZE2-300	74 1	16024-ZV4-650	55 6	17701
		16028-ZV4-650	55 7	17702

C Reference with "Part name index"

PART NAME INDEX		
Part name	Page	Ref.
[A]		
ABSORBER, FUEL	80	5
ARMATURE COMP.	62	7
ARM COMP., LINK JOINT	102	18
ARM COMP., SHIFT LINK	102	14
ARM COMP., TILT	97	20
ARM, FUEL PUMP ROCKER	51	4
ARM, REVERSE LOCK	97	18
ARM, SHIFT LINK	92	7
ARM, STOPPER	52	12
ARM, THROTTLE REMOTE	92	6
ARM, VALVE ROCKER	51	3
[B]		
BAG, TOOL, 160MM	101	10
BAND	103	37
BAND B1, WIRE	87	1
BAND, CORD	85	18
BAND, TUBE CLIP, 11MM	81	20
BAND, TUBE CLIP, 12.5MM	81	19

E-2 CYLINDER HEAD

Block No.

Ref No.

Service item		F.R.T.
O-RING, 26X2.7	0.1
PLUG, SPARK	0.2
O-RING, 9.5X1.5	0.2
SENSOR ASSY., WATER TEMPERATURE	0.3
COVER COMP., HEAD	1.8
PACKING, HEAD COVER	2.4
GASKET, CYLINDER HEAD	2.4
OIL SEAL, 20X32X6	3.1
HEAD COMP., CYLINDER	3.1

Ref. No.	Part No.	Description	Reqd. QTY						Serial No.	Parts catalogue code
			9901	9901	1001	1001	1001	1001		
1	12166-ZW9-000	STOPPER, ENGINE SIDE	2	2	2	2	2	2		
2	12210-ZW9-000ZA	HEAD COMP., CYLINDER	1	1	1	1	1	1		
3	12251-ZW9-003	GASKET, CYLINDER HEAD	1	1	1	1	1	1		
4	12310-ZW9-000	COVER COMP., HEAD	1	1	1	1	1	1		
5	12312-ZW9-000	PACKING, HEAD COVER	1	1	1	1	1	1		
6	15611-921-000	CAP, OIL (NO GAUGE)	1	1	1	1	1	1		
7	16617-ZW9-000	HOLDER, CABLE	1	1	1	1	1	1	SC,SG	
	16617-ZW9-010		1	1	1	1	1	1	1001800 LHC,LHD	
			1	1	1	1	1	1	1001801 LHC,LHD	
8	35673-ZV5-003	SENSOR ASSY., WATER TEMPERATURE	1	1	1	1	1	1		
9	90003-ZW9-000	BOLT, FLANGE, 6X22	4	4	4	4	4	4		
10	90007-ZW9-003	BOLT, FLANGE, 8X83	6	6	6	6	6	6		
11	90011-ZW9-000	BOLT, FLANGE, 6X14(CT200)	1	1	1	1	1	1		
12	90020-ZW9-000	BOLT, FLANGE, 8X40	2	2	2	2	2	2		
13	91202-KJ9-003	OIL SEAL, 30X32X6	1	1	1	1	1	1		
14	91301-805-000	O-RING, 26X2.7	1	1	1	1	1	1		
15	91307-PK2-005	O-RING, 9.5X1.5(HONDA KIKAKI)	1	1	1	1	1	1		
16	98059-55916	PLUG, SPARK (CR5EH-9)	2	2	2	2	2	2		
	98059-55926	PLUG, SPARK (U16FER9)	2	2	2	2	2	2		

2000.09.20 E

Page No.

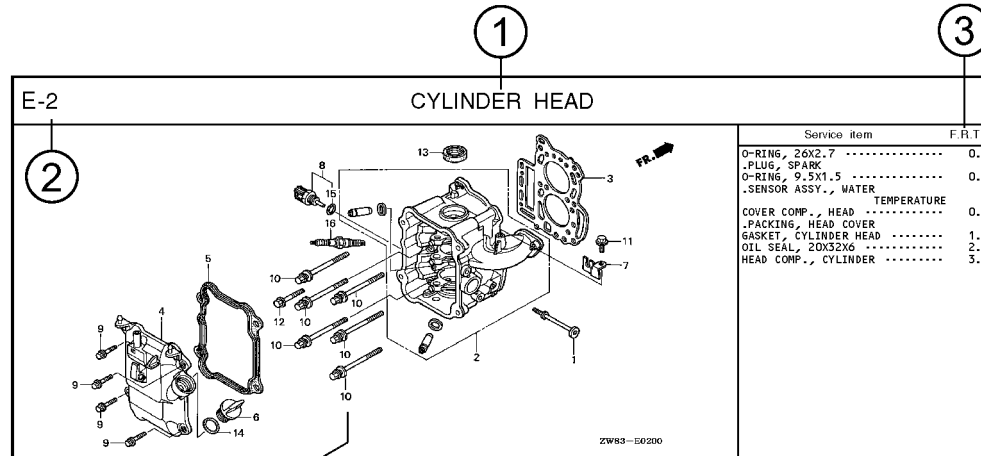
1

2

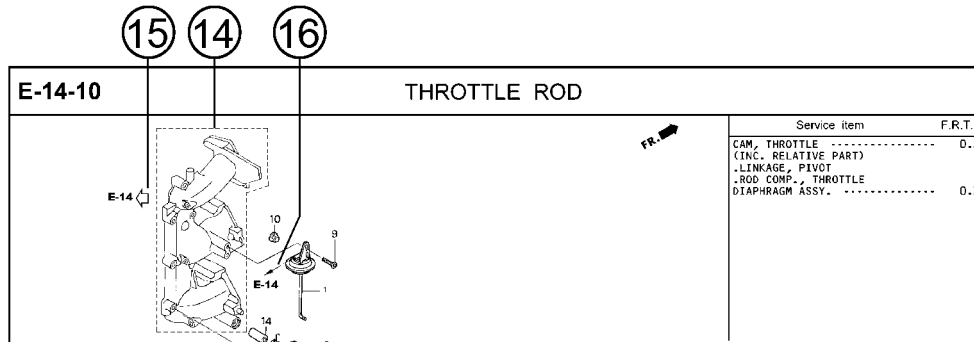
2015.01.10

E

Part catalogue structure



Ref. No.	Part No.	Description	Reqd. QTY						Serial No.	Parts catalogue code
			BF 9.9D1	BFF 9.9D1	BF 10D1	BFF 10D1	BF 10B1	BFF 10B1		
1	12166-zw9-000	STOPPER, ENGINE SIDE	2	2	2	2	2			
2	12210-zw9-000ZA	HEAD COMP., CYLINDER								
3	12251-zw9-003	GASKET, CYLINDER HEAD	1	1	1	1	1			
4	12310-zw9-000	COVER COMP., HEAD	1	1	1	1	1			
5	12312-zw9-000	PACKING, HEAD COVER	1	1	1	1	1			
6	15611-921-000	CAP, OIL	1	1	1	1	1			
		(NO GAUGE)								
7	16617-zw9-000	HOLDER, CABLE	1	1	1	1	1	SC,SG		
	16617-zw9-010		1	1	1	1	1	1001800 LHC,LHD		



① Block title ② Block number

③ Service item/Flat rate time

④ Reference number

- Title number marked with the parenthesis or parentheses indicates that it continues from the previous page.

⑤ Part number ⑥ Honda color code

⑦ Description

⑧ Assemblies

- Sections framed with broken lines in the exploded view drawings are available as complete assemblies. (Their individual parts can also be obtained.)

⑨ Color description

⑩ Note

- Notes are shown with the parentheses in the part name column.

⑪ Required quantity

- Required QTY shown in the parenthesis or parentheses indicates the optional part.
- Required QTY marked with "N" Indicates the optional part that should be selected as needed.
- Required QTY indicates the number of the part used in the block.

⑫ Serial number

⑬ Type

- When the type column is blank, it indicates that the part is applicable to all types.
- As the type of the actual unit may differ from the "parts catalogue, type" please refer to "Models, types and applicable serial numbers" for confirmation.

⑭

- Parts enclosed within a dotted line are covered in a different block.

⑮

- A hollow arrow indicates the block No. for the parts enclosed within a dotted line.

⑯

- A solid arrow indicates the block No. the part in question is connected to.

When the parts were revised



Be sure to check the serial number!!



Ref. No.	Part No.	Description	Reqd. QTY						Serial No.
			BF 99D1	BFP 99D1	BF 10D1	BFP 10D1	BF 10B1	BFP 10B1	
1	12166-ZW9-000	STOPPER, ENGINE SIDE	2	2	2	2	2	2	
2	12210-ZW9-000ZA	HEAD COMP., CYLINDER *NHS* DARK GRAY	1	1	1	1	1	1	
3	12251-ZW9-003	GASKET, CYLINDER HEAD	1	1	1	1	1	1	
4	12310-ZW9-000	COVER COMP., HEAD	1	1	1	1	1	1	
5	12312-ZW9-000	PACKING, HEAD COVER	1	1	1	1	1	1	
6	15611-921-000	CAP, OIL (NO GAUGE)	1	1	1	1	1	1	
7	16617-ZW9-000	HOLDER, CABLE (###)	1	1	1	1	1	1	SC, SG LHC, LHD LHC, LHD
	16617-ZW9-010	1	1	1	1	1	1	

The number has been used from the initial model without revision. When shown at the left side, it is applicable to the models of No.1001801 and the subsequent numbers. When shown at the right side, it is applicable to the models up to No.1001800.

• The parts listed with "###" at the end of the parts name have limited supply period (parts not for sale).

Abbreviations used in the parts catalogue

• The following abbreviations are used in the parts name column.

- A Ampere
- A.C. Alternating current
- ASSY. Assembly
- AT. Automatic transmission
- C.D.I. Capacitive discharge ignition
- COMP. ... Complete
- D.C. Direct current
- EX. Exhaust
- G.F.C.I ... Ground fault circuit interruptor
- HEX. Hexagonal
- H.S.T. Hydrostatic transmission
- FR.Front
- IN.Inlet
- L (100L) .Link (100 Links)
- L.Left
- MMMillimeter
- MT.Manual Transmission
- P.T.O.Power take off
- R.Right
- RR.Rear
- STD.Standard
- T (22T) ...Tooth (22 Teeth)
- VVolt
- WWatt

Models, parts catalogue codes and applicable serial numbers

- Models, parts catalogue codes and applicable serial Nos. given in this parts catalogue can be identified as follows.

Model	Type	Parts catalogue type	Applicable engine serial No.	Applicable carburetor identification No.
GX35NT	S3	S3	GCAST-1000001~	WYB 16C, WYB 14D, WYB 36
	SATM	SATM		
	SGT3	SGT3		
	SGT9	SGT9		
	ST3	ST3		WYB 14D, WYB 36
	ST3E	ST3E		WYB 16C, WYB 14D, WYB 36
	STSC	STSC		WYB 22/A, WYB 37
	T3	T3		WYB 22A, WYB 37
	T4	T4		WYB 37
	TAR	TAR		WYB 22/A, WYB 37
	TAT3	TAT3		WYB 37
	TMMS	TMMS		WYB 22/A, WYB 37
	TMS3	TMS3		WYB 37
	TR3	TR3		WYB 22/A, WYB 37
TTSC	TTSC	WYB 37		

* Of carburetor identification numbers, only the portions underlined in the example below are used for registration.

WYB 16C

1

Features of each type

- See the following table for the features of each type. (Items in brackets are optional)

Model Type	GX35NT						
	S3	SATM	SGT3	SGT9	ST3	ST3E	STSC
Tank guard			●	●	●	●	●
Clutch housing							
Engine stop switch							

Model Type	GX35NT							
	T3	T4	TAR	TAT3	TMMS	TMS3	TR3	TTSC
Tank guard								
Clutch housing					●	●		
Engine stop switch					●	●		

Fuel hose, general purpose hoses and vinyl hose

- The standard part fuel hose, general purpose hose and vinyl hose may be substituted by the coiled bulk part.
- When ordering the standard part fuel hose, general purpose hose and vinyl hose use the bulk part number written in the parts catalog in brackets () underneath the part name.
- When exchanging the hose, cut and use at the specified length as mentioned in the part name.
(For the method of cutting the bulk part, and method of filling out orders etc., please refer to the instructions issued with the bulk part.)

Bulk part number of fuel hose, general purpose hose and vinyl hose.

Example: 9 5 0 0 1 - 7 5 0 0 1 - 5 0 M

Bulk part number:

Refers to the bulk part.

Marking code (fuel hose and general purpose hose)

Change code (Vinyl hose)

Indicates number mark or change sequence, however, the code for the bulk part must be strictly 0 (zero).

Types of code:

- Fuel hose
 - 2: Red outside braid (3 mm inside dia. only)
 - 5: Black inside braid
 - 3: Red (3 mm inside dia. only)
 - 4: Ash gray with red stripe (3 mm inside dia. only)
 - 6: Black

- General hose
 - 1: Ash gray
 - 2: Ash gray
 - 3: Black
 - 5: Black

- Vinyl hose
 - 1: Clear
 - 2: Black
 - 3: Light red
 - 6: Light red
 - 7: Pale black

Lengths:

- 001: 1 m (standard)
 - 003: 3 m
 - 008: 8 m
- Application or specification of some parts is not settled.

I.D code: (fuel hose and general purpose hose)

- | | | | | |
|------------|--------------------|--------------------|-----------------------------|-----------------------------|
| 30: 3.0 mm | 50: 5.0 mm | 70: 7.0 mm | 11: 11 mm | 12: 12 (outside dia. 17) mm |
| 35: 3.5 mm | 55: 5.3 mm, 5.5 mm | 75: 7.3 mm, 7.5 mm | 91: 12 (outside dia. 15) mm | 14: 14 mm |
| 45: 4.5 mm | 65: 6.5 mm | 80: 8.0 mm | 92: 12 (outside dia. 16) mm | 17: 17 mm |

ID./OD. code: (vinyl hose)

- | | | | | |
|-------------------------|--------------------------|---------------------------|---------------------------|---------------------------|
| 01: ID. 2.9, OD. 6.8 mm | 12: ID. 5.0, OD. 7.0 mm | 21: ID. 8.0, OD. 9.0 mm | 37: ID. 11.0, OD. 15.0 mm | 50: ID. 16.0, OD. 19.0 mm |
| 03: ID. 3.0, OD. 6.0 mm | 10: ID. 5.0, OD. 8.0 mm | 23: ID. 8.0, OD. 12.0 mm | 38: ID. 12.0, OD. 13.0 mm | 55: ID. 17.5, OD. 20.5 mm |
| 05: ID. 3.5, OD. 6.5 mm | 11: ID. 5.0, OD. 9.0 mm | 25: ID. 9.0, OD. 11.0 mm | 39: ID. 12.0, OD. 14.0 mm | 60: ID. 22.0, OD. 27.0 mm |
| 07: ID. 4.0, OD. 7.0 mm | 14: ID. 6.0, OD. 9.0 mm | 27: ID. 9.0, OD. 13.0 mm | 40: ID. 12.0, OD. 16.0 mm | |
| 08: ID. 4.5, OD. 6.5 mm | 17: ID. 7.0, OD. 9.0 mm | 33: ID. 10.0, OD. 14.0 mm | 43: ID. 13.0, OD. 15.0 mm | |
| 09: ID. 4.5, OD. 8.0 mm | 19: ID. 7.0, OD. 11.0 mm | 36: ID. 11.0, OD. 13.0 mm | 45: ID. 14.0, OD. 18.0 mm | |

Hose type:

- 1: Fuel hose
- 3: Vinyl hose
- 5: General hose

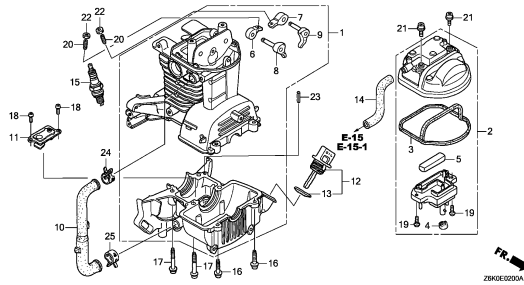
⊙ **CAUTION: It is DANGEROUS to confuse the fuel hose with the general purpose hose or vinyl hose.**

Never use a general purpose hose or vinyl hose in place of a fuel hose or vice versa. Always use the correct bulk part in the parts catalogue, according to the service manual or the instructions issued with the bulk part.

ENGINE GROUP

E-2

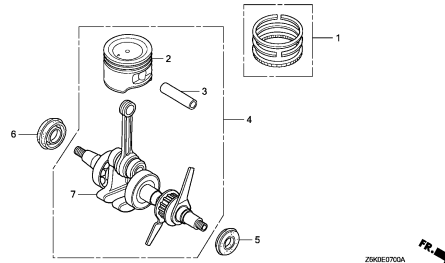
CRANKCASE SET



ZBK0E0200A

E-7

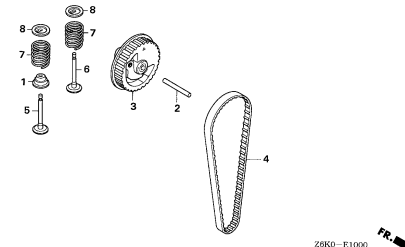
CRANKSHAFT/PISTON



ZBK0E0700A

E-10

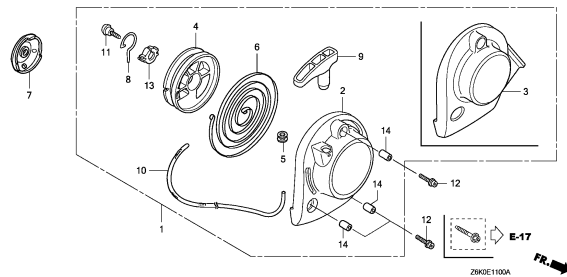
CAMSHAFT PULLEY



ZBK0-E1000

E-11

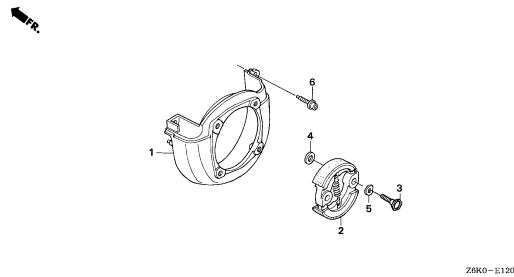
RECOIL STARTER



ZBK0E1100A

E-12

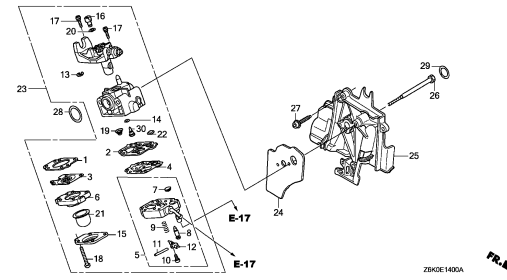
FAN COVER/CLUTCH



ZBK0-E1200

E-14

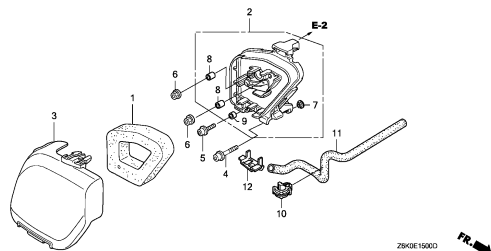
CARBURETOR



ZBK0E1400A

E-15

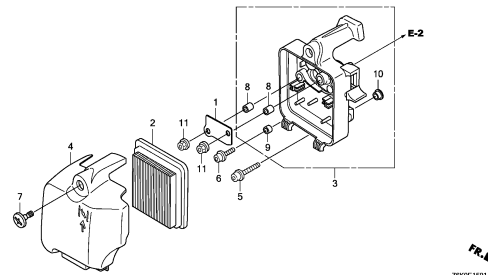
AIR CLEANER(1)



ZBK0E1500D

E-15-1

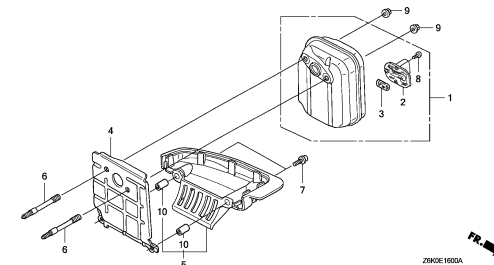
AIR CLEANER(2)



ZBK0E1501

E-16

MUFFLER



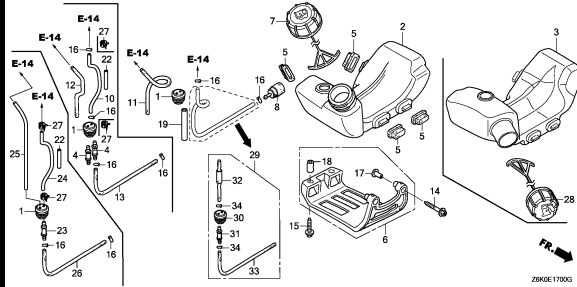
ZBK0E1600A

2

ENGINE GROUP

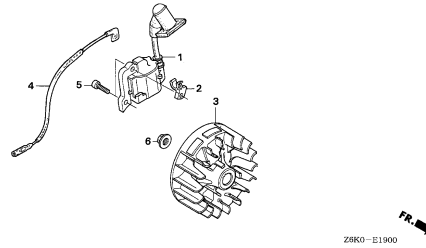
E-17

FUEL TANK



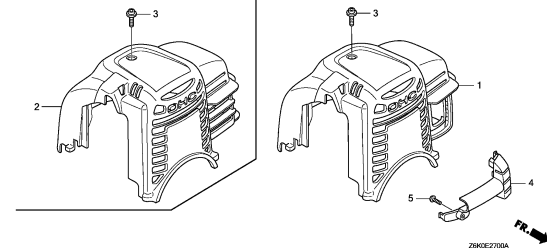
E-19

FLYWHEEL



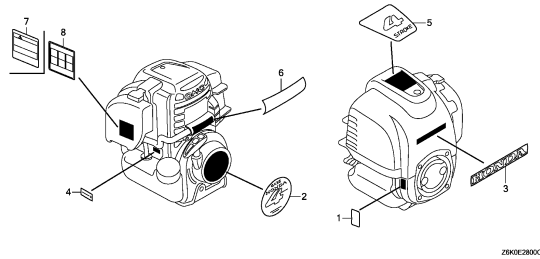
E-27

TOP COVER



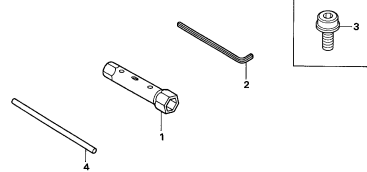
E-28

LABEL



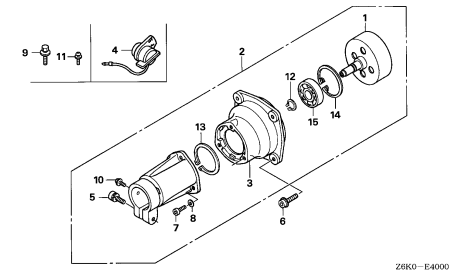
E-29

TOOL



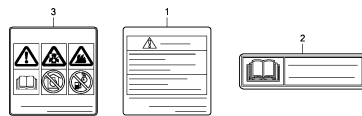
E-40

OTHER PARTS(1)



E-40-1

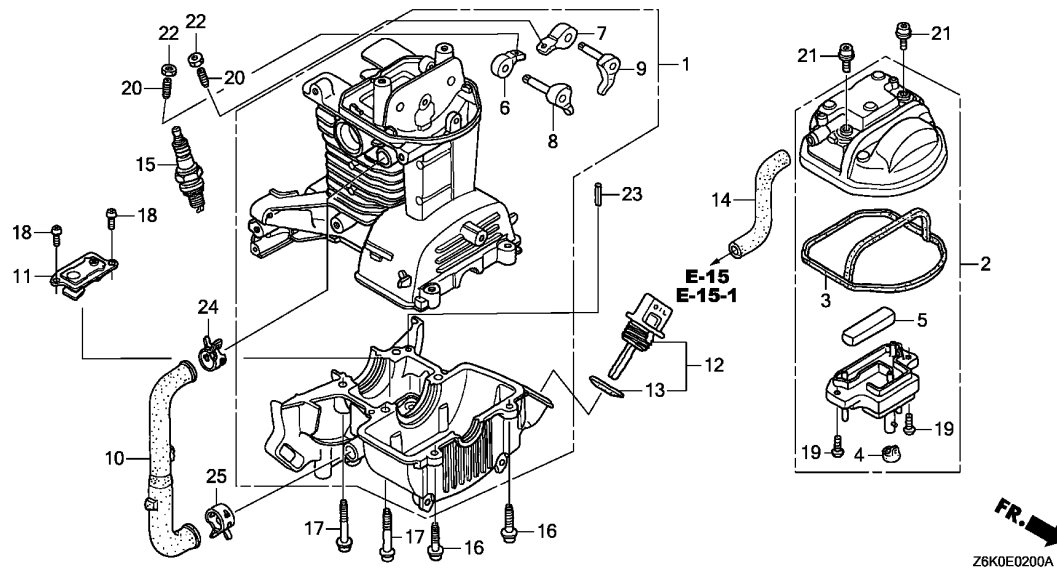
OTHER PARTS(2)



2

E-2

CRANKCASE SET



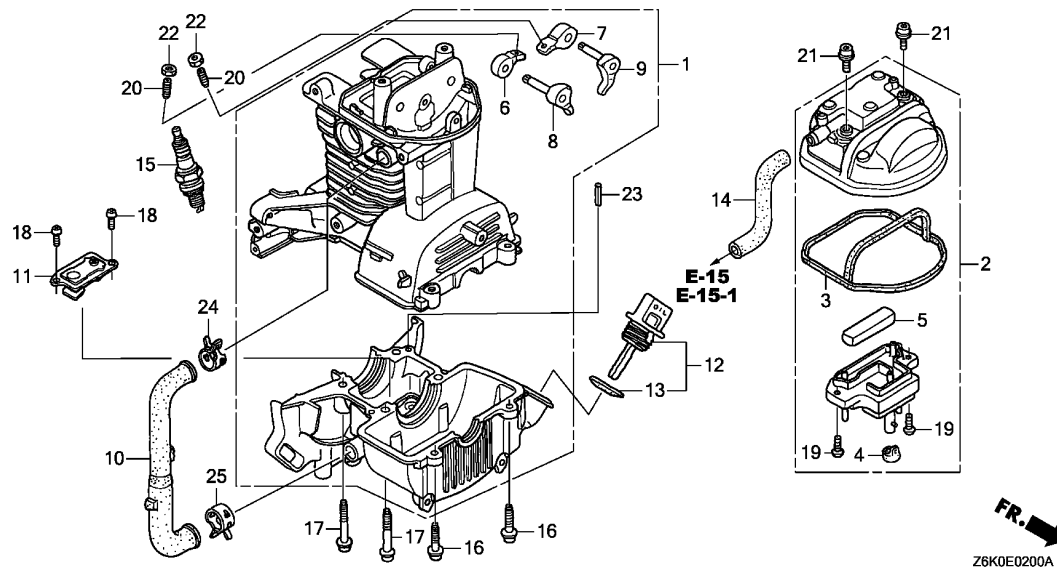
Ref. No.	L.O.N. (Relative ref. Number)	Description	F.R.T.
----------	-------------------------------	-------------	--------

Ref. No.	Part No.	Description	Reqd. QTY		Serial No.	Parts catalogue code
			GX	NT		
1	10100-Z3F-405	CRANKCASE SET	1			
2	12310-Z0Z-000	COVER COMP., CYLINDER HEAD ..	1			
3	12312-Z0Z-300	SEAL, HEAD COVER	1			
4	12314-Z0H-300	GROMMET, HEAD COVER	1			
5	12367-Z0H-000	FILTER, BREATHER	1			
6	14431-Z0H-003	ARM, IN. VALVE ROCKER	1			
7	14441-Z0H-003	ARM, EX. VALVE ROCKER	1			
8	14730-Z0Z-000	LIFTER COMP., IN. VALVE	1			
9	14740-Z0Z-000	LIFTER COMP., EX. VALVE	1			
10	15422-Z0Z-000	TUBE, OIL	1			
11	15510-Z3E-000	PLATE ASSY., OIL OUTLET VALVE	1			
12	15600-Z3F-000	CAP ASSY., OIL FILLER	1			
13	15625-Z0T-800	PACKING, OIL FILLER CAP	1			
14	15721-Z0Z-000	TUBE, BREATHER	1			
15	31914-Z0H-003	PLUG, SPARK (CMR4H) (NGK)	(1)			
	31915-Z0H-003	PLUG, SPARK (CMR5H) (NGK)	1			
	31916-Z0H-003	PLUG, SPARK (CMR6H) (NGK)	(1)			
16	90009-Z0H-003	BOLT, SOCKET, 5X20	2		S3,SATM,SGT3,SGT9,ST3,ST3E,STSC,T3,T4,TAT3,TMS3,TR3,TTSC	
	90009-Z3E-901	2		TAR, TMMS	
17	90010-Z0Z-003	BOLT, SOCKET, 5X32	4			
18	90013-Z3E-003	SCREW, PAN, 4X8	2		SATM,SGT9,ST3E,STSC,T4,TAR, TMMS, TTSC	
	90013-Z0H-004	2	1002284	S3,SGT3,ST3,T3,TAT3,TMS3,TR3	
	90013-Z3E-003	2	1002285	S3,SGT3,ST3,T3,TAT3,TMS3,TR3	
19	90013-Z3F-003	SCREW, PAN, 4X8	2		SATM,SGT9,ST3E,STSC,T4,TAR, TMMS, TTSC	
	90013-Z0Z-003	2	1002284	S3,SGT3,ST3,T3,TAT3,TMS3,TR3	
	90013-Z3F-003	2	1002285	S3,SGT3,ST3,T3,TAT3,TMS3,TR3	



E-2

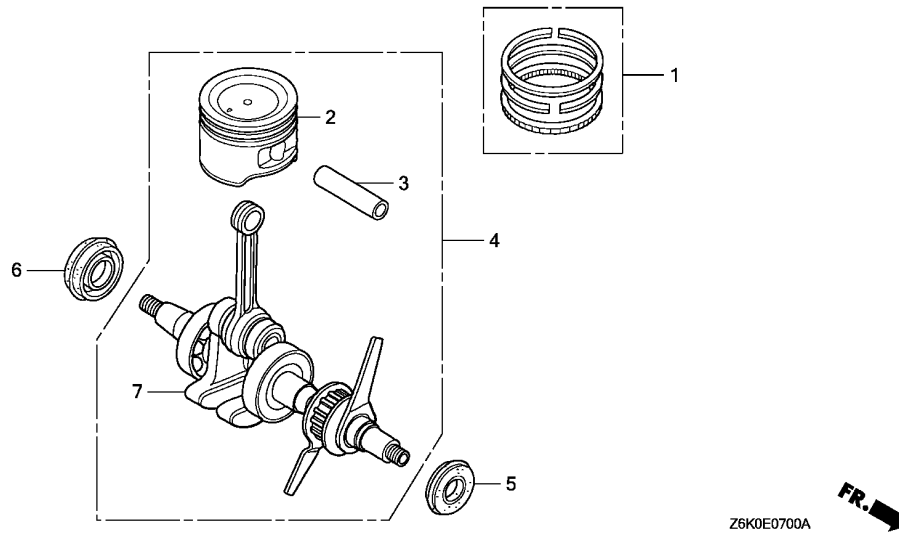
CRANKCASE SET



Ref. No.	Part No.	Description	Reqd. QTY		Serial No.	Parts catalogue code
			GX	NT		
20	90017-Z0H-000	SCREW, TAPPET ADJUSTING	2		
21	90019-Z0H-003	BOLT, SOCKET, 5X12	2		
22	90206-ZM3-000	NUT, TAPPET ADJUSTING	2		
23	94305-40102	PIN, SPRING, 4X10	1		
24	95002-41200-08	CLAMP, TUBE(D12)	1		
25	95002-41300-04	CLAMP, TUBE(D13)	1		

E-7

CRANKSHAFT/PISTON



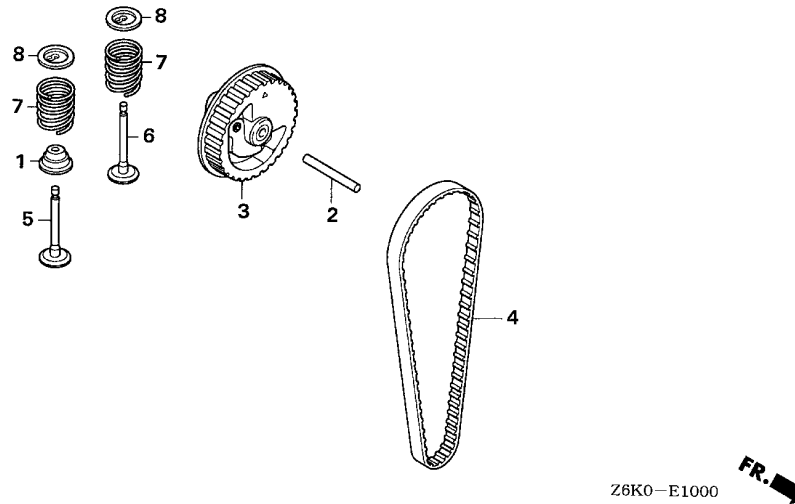
Ref. L.O.N. (Relative ref. Number) F.R.T.
No. Description

Ref. No.	Part No.	Description	Reqd. QTY		Serial No.	Parts catalogue code
			GX	NT		
1	13010-ZM5-000	RING SET, PISTON	1			
2	13101-Z0Z-000	PISTON	1		S3,SATM,SGT3,SGT9,ST3,ST3E,STSC,T3,T4,TAT3,TMS3,TR3	
	13101-Z3F-000	1		TAR, TMMS	
	13101-Z0Z-010	1		TTSC	
3	13111-ZM5-000	PIN, PISTON	1			
4	13310-Z0Z-000	CRANKSHAFT COMP.	1		S3,SATM,SGT3,SGT9,ST3,ST3E,STSC,T3,T4,TAT3,TMS3,TR3	
	13310-Z3F-000	1		TAR, TMMS	
	13310-Z0Z-010	1		TTSC	
5	91212-Z3E-003	OIL SEAL, 10X20X5	1		SATM,SGT9,ST3E,STSC,T4,TAR, TMMS, TTSC	
	91212-Z3E-000	1	1002284	S3,SGT3,ST3,T3,TAT3,TMS3,TR3	
	91212-Z3E-003	1	1002285	S3,SGT3,ST3,T3,TAT3,TMS3,TR3	
6	91214-Z3F-003	OIL SEAL, 15X25X6	1		SATM,SGT9,ST3E,STSC,T4,TAR, TMMS, TTSC	
	91214-Z3F-000	1	1002284	S3,SGT3,ST3,T3,TAT3,TMS3,TR3	
	91214-Z3F-003	1	1002285	S3,SGT3,ST3,T3,TAT3,TMS3,TR3	
7	13310-Z0Z-305	CRANKSHAFT COMP.	(1)		SATM, TTSC	
	13310-Z3F-305	(1)		TAR, TMMS	



E-10

CAMSHAFT PULLEY

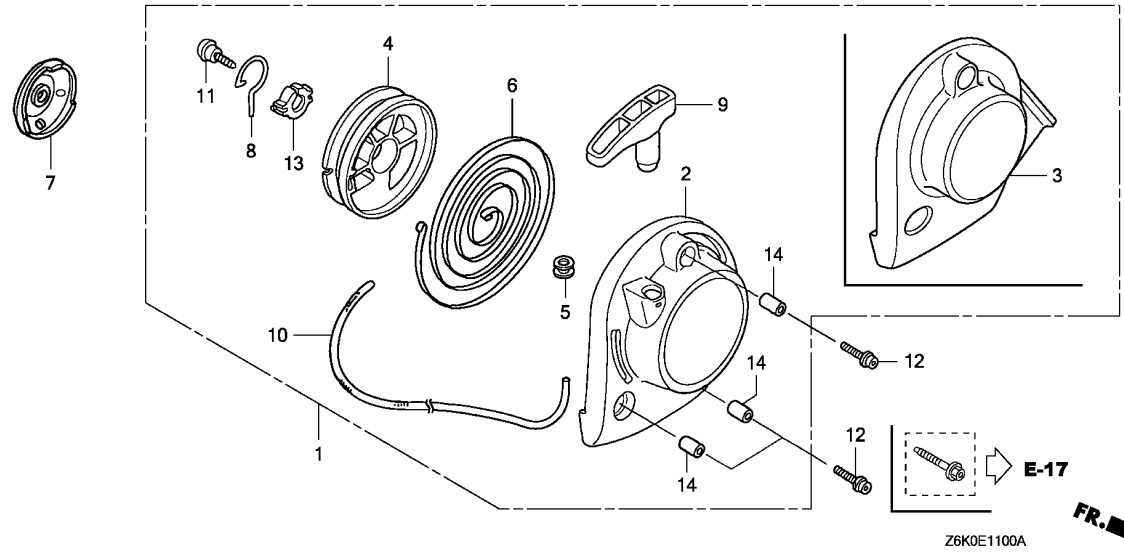


Ref. L.O.N. (Relative ref. Number) F.R.T.
No. Description

Ref. No.	Part No.	Description	Reqd. QTY		Serial No.	Parts catalogue code
			GX	35		
1	12209-Z3E-003	SEAL, VALVE STEM	1	-----	SATM,SGT9,ST3E,STSC,T4,TAR, TMMS,TTSC	
	12209-Z3E-000	1	-----	1002284 S3,SGT3,ST3,T3,TAT3,TMS3,TR3	
	12209-Z3E-003	1	1002285	----- S3,SGT3,ST3,T3,TAT3,TMS3,TR3	
2	14126-Z0Z-003	ROLLER, 4X31.8	1	-----		
3	14320-Z0Z-000	PULLEY COMP., CAMSHAFT	1	-----		
4	14400-Z3F-013	BELT, TIMING(76ZU6 G-310) ...	1	-----	TAR, TMMS, TTSC	
	14400-Z0Z-003	BELT, TIMING(76ZU7 G-300) ...	1	-----	1002284 S3,SGT3,ST3,T3,TAT3,TMS3,TR3	
	14400-Z3F-003	1	-----	1191025 SATM,SGT9,ST3E,STSC,T4	
	14400-Z3F-013	BELT, TIMING(76ZU6 G-310) ...	1	1002285	1191025 S3,SGT3,ST3,T3,TAT3,TMS3,TR3	
	14400-Z0Z-800	VALVE, IN.(ZI)	1	1191026	----- S3,SATM,SGT3,SGT9,ST3,ST3E,STSC,T3,T4,TAT3,TMS3,TR3	
	14711-Z3F-000	VALVE, IN.(FI)	1	-----	TAR, TMMS	
6	14721-Z0Z-800	VALVE, EX.(ZE)	1	-----		
	14721-Z3F-000	VALVE, EX.(FE)	1	-----	TAR, TMMS	
7	14751-Z0Z-000	SPRING, VALVE	2	-----		
8	14771-Z0H-000	RETAINER, VALVE SPRING	2	-----		

E-11

RECOIL STARTER



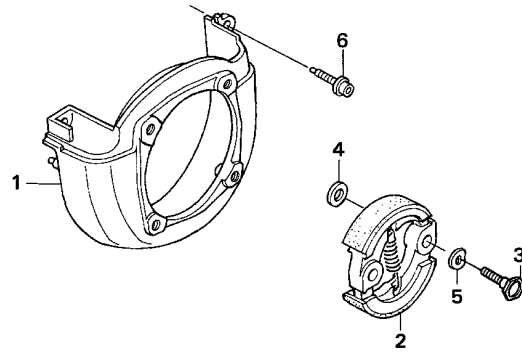
Ref. No.	L.O.N. (Relative ref. Number)	Description	F.R.T.
----------	-------------------------------	-------------	--------

Ref. No.	Part No.	Description	Reqd. QTY	Serial No.	Parts catalogue code
			GX 35 NT		
1	28400-Z0Z-305	STARTER ASSY., RECOIL (COO) (FOR U.S.A.)	1	-----	S3,SATM,SGT3,ST3,STSC,T3,TAT3,TMS3,TTSC
	28400-Z0Z-003	STARTER ASSY., RECOIL	1	-----	SGT9,ST3E,T4
	28400-Z0Z-315	STARTER ASSY., RECOIL (COO) (FOR U.S.A.)	1	-----	TAR
	28400-Z3F-M01	STARTER ASSY., RECOIL	1	-----	TAR
	28400-Z6K-003	STARTER ASSY., RECOIL	1	-----	TMMS,TR3
2	28414-Z0Z-000	CASE, RECOIL STARTER	1	-----	S3,SATM,SGT3,SGT9,ST3,ST3E,STSC,T3,T4,TAT3,TMS3,TTSC
	28414-Z3F-M01	CASE, RECOIL STARTER	1	-----	TAR
3	28414-Z6K-003	CASE, RECOIL STARTER	1	-----	TMMS,TR3
4	28421-ZM3-003	REEL, RECOIL STARTER	1	-----	
5	28433-ZM3-003	GUIDE, ROPE	1	-----	
6	28442-Z0H-003	SPRING, RECOIL STARTER	1	-----	
7	28451-Z0H-003	PULLEY, RECOIL STARTER	1	-----	
8	28459-Z0H-003	ARM, SWING	1	-----	
9	28461-ZM3-003	KNOB, RECOIL STARTER	1	-----	S3,SATM,SGT3,SGT9,ST3,ST3E,STSC,T3,T4,TAT3,TMS3,TR3,TTSC
	28461-Z3F-M01	KNOB, RECOIL STARTER	1	-----	TAR,TMMS
10	28462-ZM3-003	ROPE, RECOIL STARTER	1	-----	
11	90012-ZM3-003	SCREW, SETTING	1	-----	
12	90018-Z0H-003	BOLT, SOCKET, 5X16	3	-----	S3,SATM,T3,T4,TAT3,TMS3,TR3,TTSC
	90018-Z3E-901	BOLT, SOCKET, 5X16	1	-----	SGT3,SGT9,ST3,ST3E,STSC
	90018-Z3E-901	BOLT, SOCKET, 5X16	3	-----	TAR,TMMS
13	91504-ZM3-003	COLLAR	1	-----	
14	91506-ZM3-000	COLLAR A, HEAD COVER	3	-----	



E-12

FAN COVER/CLUTCH



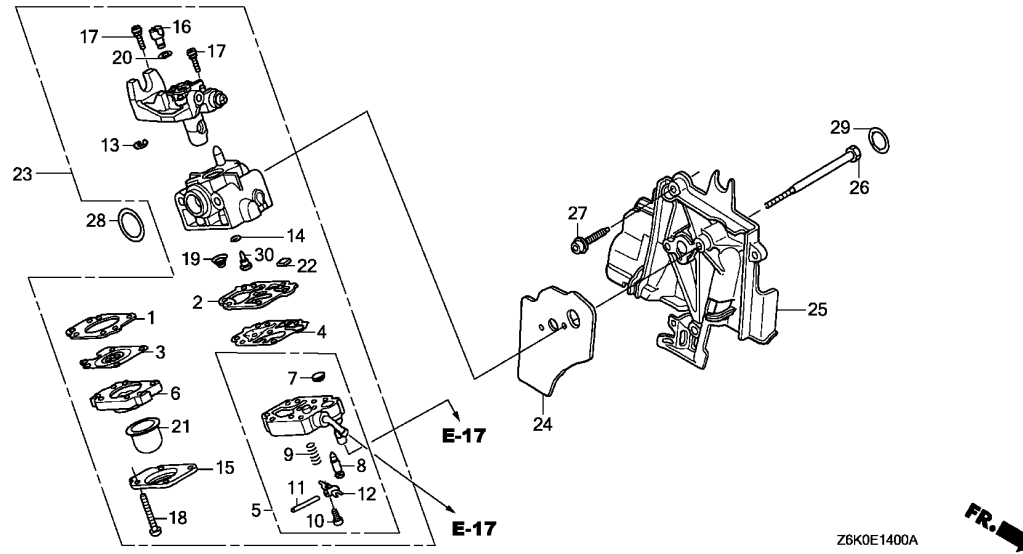
Z6K0-E1200

Ref. No.	L.O.N.	(Relative ref. Number)	Description	F.R.T.
----------	--------	------------------------	-------------	--------

Ref. No.	Part No.	Description	Reqd. QTY		Serial No.	Parts catalogue code
			GX	NT		
1	19611-Z0Z-000	COVER, FAN	1			
2	22000-Z0Z-003	CLUTCH ASSY.(ACRO)	1			
3	22253-Z3F-000	BOLT, CLUTCH(8MM)	2			
4	22254-Z3F-000	WASHER, CLUTCH(8X17)	2			
5	22255-Z3F-000	WASHER, WAVE(10MM)	2			
6	90009-Z0H-003	BOLT, SOCKET, 5X20	3		----- S3,SATM,SGT3,SGT9,ST3,ST3E,STSC,T3,T4,TAT3,TMS3,TR3,TTSC	
	90009-Z3E-901	3		----- TAR, TMMS	

E-14

CARBURETOR



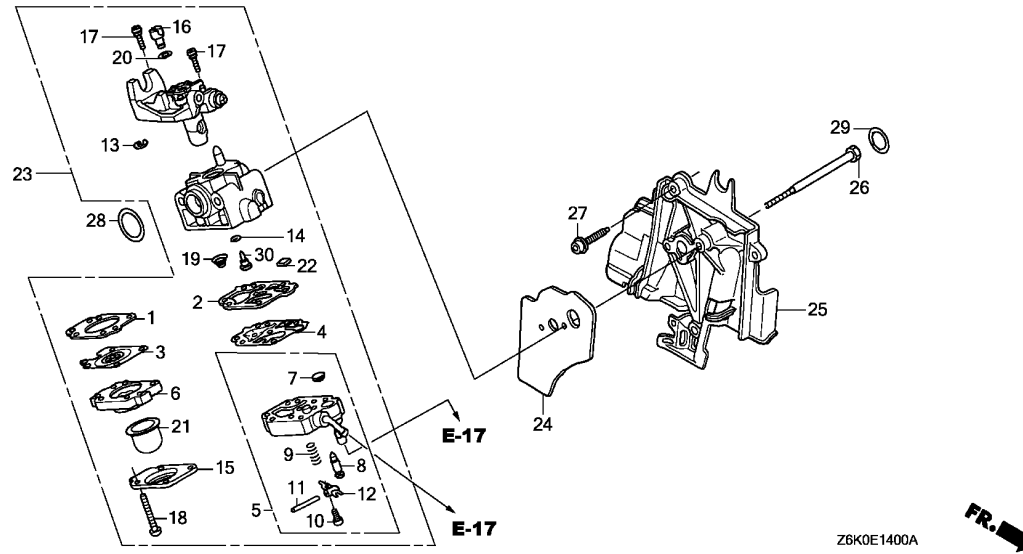
Ref. L.O.N. (Relative ref. Number) F.R.T.
 No. Description

Ref. No.	Part No.	Description	Reqd. QTY	Serial No.	Parts catalogue code
			GX 35 NT		
1	16010-ZM3-004	GASKET, METERING DIAPHRAGM	1		
2	16011-ZOH-013	GASKET, PUMP	1		
3	16013-ZOH-003	DIAPHRAGM ASSY., METERING	1		
4	16014-ZM3-004	DIAPHRAGM, PUMP	1		
5	16015-Z6J-003	BODY ASSY., PUMP	1	-----	TAR, TMMS, TTSC
	16015-ZOH-013	1	-----	WYB 14D S3, SATM, SGT3, SGT9, ST3, ST3E, STSC
	(CARBURETOR NO.)	1	-----	WYB 22A T3, T4, TAT3, TMS3, TR3
	16015-Z6J-003	1	WYB 36	----- S3, SATM, SGT3, SGT9, ST3, ST3E, STSC
	(CARBURETOR NO.)	1	WYB 37	----- T3, T4, TAT3, TMS3, TR3
			
6	16017-ZM3-004	BODY ASSY., AIR PURGE	1		
7	16018-ZM3-802	SCREEN, INLET	1		
8	16019-ZM3-004	VALVE, INLET NEEDLE	1		
9	16020-ZM3-004	SPRING, METERING LEVER	1		
10	16021-ZM3-004	SCREW, METERING LEVER PIN	1		
11	16022-ZM3-014	PIN, METERING LEVER	1		
12	16023-ZM3-004	LEVER, METERING	1		
13	16024-ZOH-003	RING, RETAINING	1		
14	16025-ZM3-004	O-RING	1		
15	16026-ZM3-004	COVER, PRIMER PUMP	1		
16	16027-ZM3-004	SWIVEL	1		
17	16028-ZM3-004	SCREW, THROTTLE COLLAR	2		
18	16029-ZM3-004	SCREW, PUMP COVER	4		
19	16030-ZM3-004	SPRING, PUMP	1		
20	16031-ZM3-004	WASHER	1		



E-14

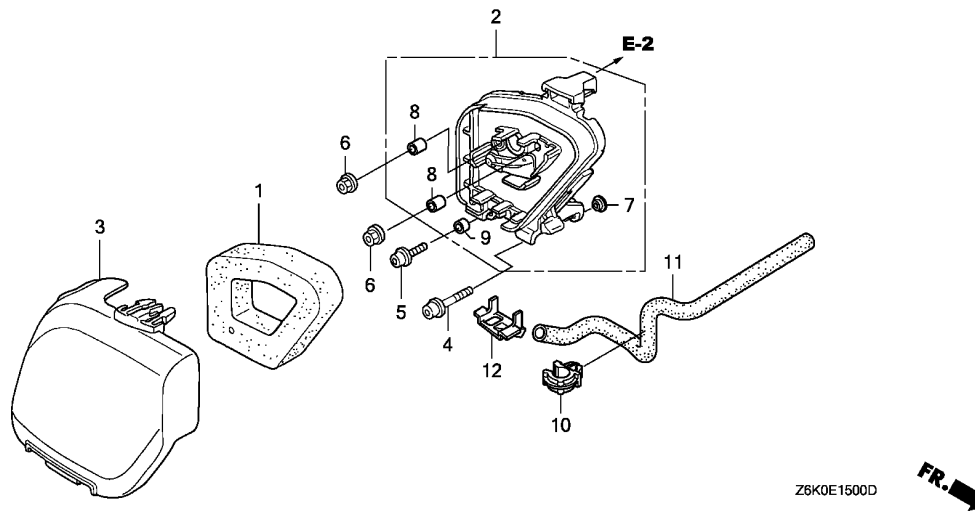
CARBURETOR



Ref. No.	Part No.	Description	Reqd. QTY		Serial No.	Parts catalogue code
			GX	35		
				NT		
21	16032-ZM3-004	PUMP, PRIMER	1			
22	16035-ZM3-802	FILTER, FUEL INLET	1			
23	16100-Z6K-811	CARBURETOR ASSY. (WYB 37)	1		-----	TAR, TMMS, TTSC
	16100-Z6K-004	CARBURETOR ASSY. (WYB 22)	1		1109390	T3, TAT3, TMS3, TR3
	16100-Z0Z-034	CARBURETOR ASSY. (WYB 16C) ...	1		1110030	S3, SATM, SGT3, SGT9, ST3, STSC
	16100-Z0Z-815	CARBURETOR ASSY. (WYB 14D) ...	1		1185256	ST3E
	16100-Z6K-014	CARBURETOR ASSY. (WYB 22A) ...	1		1186694	T4
			1	1109391	1185256	TAT3
			1	1109391	1186694	T3, TMS3, TR3
	16100-Z0Z-815	CARBURETOR ASSY. (WYB 14D) ...	1	1110031	1185088	STSC
			1	1110031	1185256	S3, SATM, SGT3, SGT9, ST3
	16100-Z6K-801	CARBURETOR ASSY. (WYB 36)	1	1185089	-----	STSC
			1	1185257	-----	S3, SATM, SGT3, SGT9, ST3, ST3E
	16100-Z6K-811	CARBURETOR ASSY. (WYB 37)	1	1185257	-----	TAT3
			1	1186695	-----	T3, T4, TMS3, TR3
24	16221-Z0Z-000	PACKING, CARBURETOR	1			
25	19631-Z0Z-010	SHROUD	1			
26	90014-Z0H-003	BOLT, 5X53	2		-----	S3, SATM, SGT3, SGT9, ST3, ST3E, STSC, T3, T4, TAT3, TMMS, TMS3, TR3, TTSC
	90014-Z3F-000	BOLT, 5X58	2		-----	TAR
27	90018-Z0H-003	BOLT, SOCKET, 5X16	2		-----	S3, SATM, SGT3, SGT9, ST3, ST3E, STSC, T3, T4, TAT3, TMS3, TR3, TTSC
	90018-Z3E-901	2		-----	TAR, TMMS
28	91301-ZM3-000	O-RING, 14.8X2.4	1			
29	91308-Z3E-000	O-RING, 12.3X2.4	1			
30	99101-Z0Z-0360	JET (#36)	(1)		-----	S3, SATM, SGT3, SGT9, ST3, ST3E, STSC
	99101-Z0Z-0370	JET (#37)	1		-----	S3, SATM, SGT3, SGT9, ST3, ST3E, STSC
	99101-ZM5-0350	JET (#35)	(1)		-----	S3, SATM, SGT3, SGT9, ST3, ST3E, STSC
	99101-ZM5-0330	JET (#33)	(1)		-----	T3, T4, TAR, TAT3, TMMS, TMS3, TR3, TTSC
	99101-ZM5-0340	JET (#34)	(1)		-----	T3, T4, TAR, TAT3, TMMS, TMS3, TR3, TTSC
	99101-ZM5-0350	JET (#35)	1		-----	T3, T4, TAR, TAT3, TMMS, TMS3, TR3, TTSC

E-15

AIR CLEANER(1)

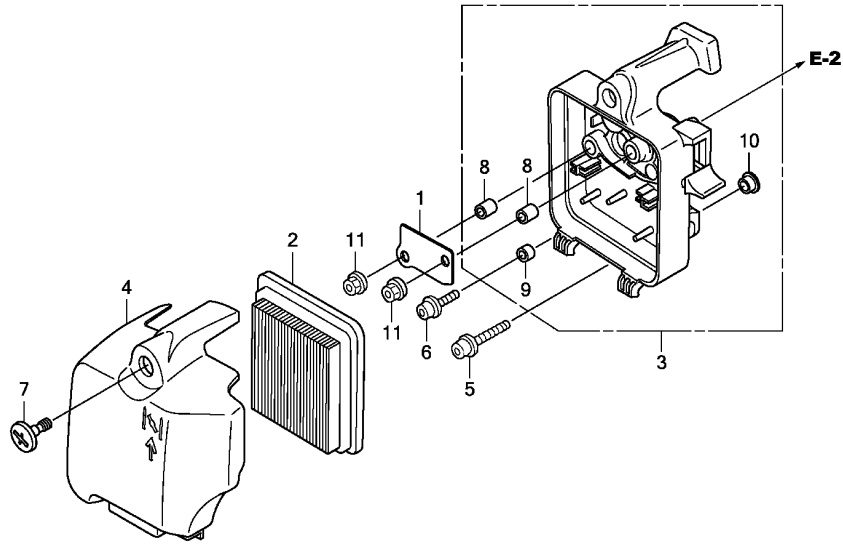


Ref. L.O.N. (Relative ref. Number) F.R.T.
No. Description

Ref. No.	Part No.	Description	Reqd. QTY		Serial No.	Parts catalogue code
			GX	NT		
1	17211-Z0Z-000	ELEMENT, AIR CLEANER	1	-----	-----	S3,SATM,SGT3,SGT9,ST3,ST3E,STSC,T3,T4,TAT3,MMMS,TMS3,TR3,TTSC
2	17220-Z0Z-000	CASE COMP., AIR CLEANER	1	-----	-----	S3,SATM,SGT3,SGT9,ST3,ST3E,STSC,T3,T4,TAT3,TMS3,TR3,TTSC
	17220-Z0Z-010	1	-----	-----	MMMS
3	17231-Z0Z-000	COVER, AIR CLEANER	1	-----	-----	S3,SATM,SGT3,SGT9,ST3,STSC,T3,TAT3,TMS3,TR3
	17231-Z0Z-010	1	-----	-----	ST3E,T4,MMMS,TTSC
4	90009-Z0Z-003	BOLT, SOCKET, 5X25	1	-----	-----	S3,SATM,SGT3,SGT9,ST3,ST3E,STSC,T3,T4,TAT3,TMS3,TR3,TTSC
	90009-Z3F-901	1	-----	-----	MMMS
5	90018-Z0H-003	BOLT, SOCKET, 5X16	1	-----	-----	S3,SATM,SGT3,SGT9,ST3,ST3E,STSC,T3,T4,TAT3,TMS3,TR3,TTSC
	90018-Z3E-901	1	-----	-----	MMMS
6	94050-05000	NUT, FLANGE, 5MM	2	-----	-----	S3,SATM,SGT3,SGT9,ST3,ST3E,STSC,T3,T4,TAT3,MMMS,TMS3,TR3,TTSC
7	91501-Z0Z-000	COLLAR, AIR CLEANER CASE	1	-----	-----	S3,SATM,SGT3,SGT9,ST3,ST3E,STSC,T3,T4,TAT3,MMMS,TMS3,TR3,TTSC
8	91503-ZM3-000	COLLAR, AIR CLEANER	2	-----	-----	S3,SATM,SGT3,SGT9,ST3,ST3E,STSC,T3,T4,TAT3,MMMS,TMS3,TR3,TTSC
9	91506-ZM3-000	COLLAR A, HEAD COVER	1	-----	-----	S3,SATM,SGT3,SGT9,ST3,ST3E,STSC,T3,T4,TAT3,MMMS,TMS3,TR3,TTSC
10	16731-ZE2-003	CLIP, TUBE	1	-----	-----	STSC,TTSC
11	17241-Z6K-800	TUBE, HOT AIR	1	-----	-----	STSC,TTSC
12	17242-Z6K-800	JOINT, HOT AIR	1	-----	-----	STSC,TTSC

E-15-1

AIR CLEANER(2)

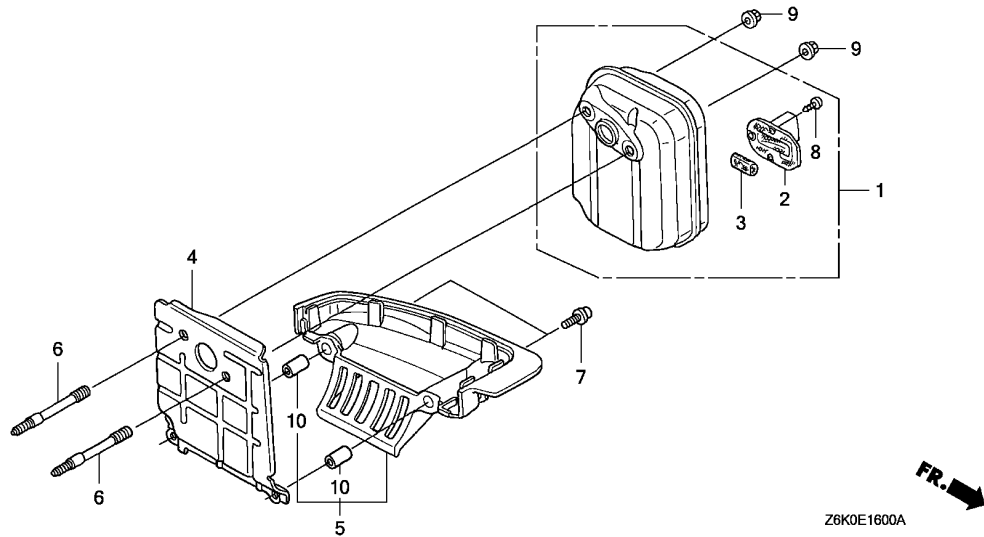


Ref. L.O.N. (Relative ref. Number) F.R.T.
 No. Description

Ref. No.	Part No.	Description	Reqd. QTY		Serial No.	Parts catalogue code
			GX	NT		
1	17204-Z3F-000	PLATE, OIL TRAP	1	-----	-----	TAR
2	17211-Z3F-000	ELEMENT, AIR CLEANER	1	-----	-----	TAR
3	17220-Z3F-000	CASE COMP., AIR CLEANER	1	-----	-----	TAR
4	17231-Z3F-000	COVER, AIR CLEANER	1	-----	-----	TAR
5	90009-Z3F-901	BOLT, SOCKET, 5X25	1	-----	-----	TAR
6	90018-Z3E-901	BOLT, SOCKET, 5X16	1	-----	-----	TAR
7	90102-Z07-003	SCREW, SPECIAL, 6X16	1	-----	-----	TAR
8	91501-Z3F-000	COLLAR, AIR CLEANER CASE(A) -	2	-----	-----	TAR
9	91502-Z3F-000	COLLAR, AIR CLEANER CASE(B) -	1	-----	-----	TAR
10	91503-Z3F-000	COLLAR, AIR CLEANER CASE(C) -	1	-----	-----	TAR
11	94050-05000	NUT, FLANGE, 5MM	2	-----	-----	TAR

E-16

MUFFLER

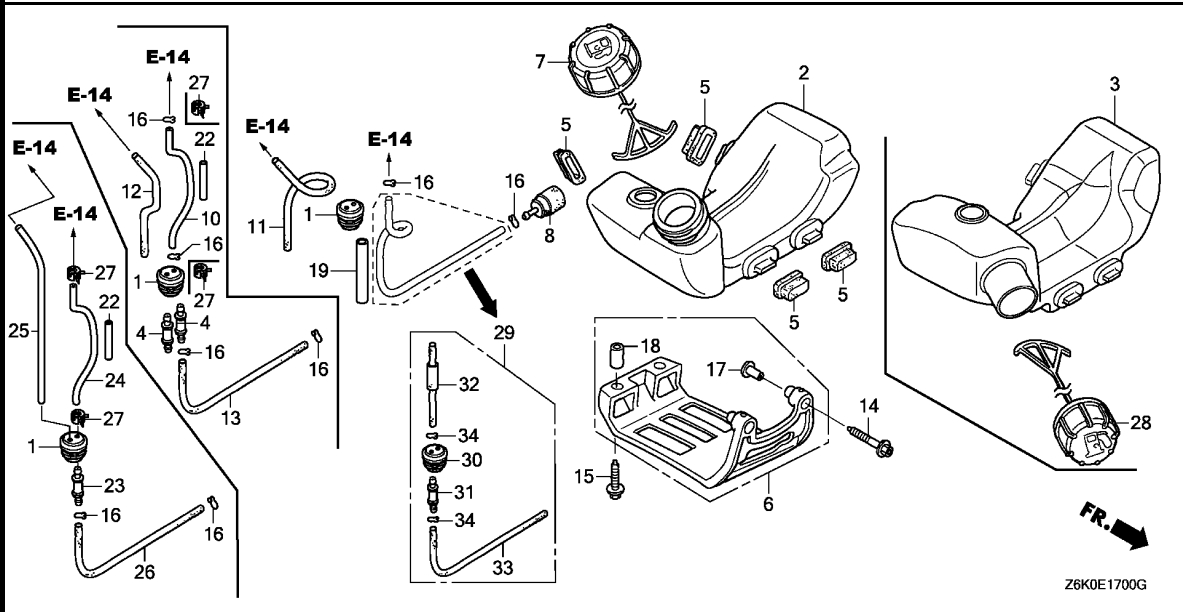


Ref. No.	L.O.N. (Relative ref. Number)	Description	F.R.T.
----------	-------------------------------	-------------	--------

Ref. No.	Part No.	Description	Reqd. QTY		Serial No.	Parts catalogue code
			GX	NT		
1	18310-Z0Z-801	MUFFLER COMP.(ARRESTER)	1		-----	S3,SGT3,SGT9,ST3,ST3E,STSC
	18310-Z3F-820	1		-----	SATM,T3,T4,TAT3,TMS3,TR3,TTSC
	18310-Z3F-821	1		-----	TAR, TMMS
2	18350-Z0Z-800	ARRESTER COMP., SPARK	1			
3	18354-Z0Z-800	FILTER, EXHAUST	1			
4	18515-Z0Z-300	GUIDE, AIR	1			
5	18518-Z0Z-020	GUIDE COMP., UNDER AIR	1			
6	90001-Z0Z-013	BOLT, STUD, 5X56.5	2			
7	90018-Z0H-003	BOLT, SOCKET, 5X16	2		-----	S3,SATM,SGT3,SGT9,ST3,ST3E,STSC,T3,T4,TAT3,TMS3,TR3,TTSC
	90018-Z3E-901	2		-----	TAR, TMMS
8	90055-ZE1-000	SCREW, TAPPING, 4X6	3			
9	90136-SM4-901	NUT, SELF-LOCK, 5MM	2			
10	91506-ZM3-000	COLLAR A, HEAD COVER	2			

E-17

FUEL TANK



Ref. No.	L.O.N. (Relative ref. Number)	Description	F.R.T.
----------	-------------------------------	-------------	--------

2

Ref. No.	Part No.	Description	Reqd. QTY		Serial No.	Parts catalogue code
			GX	NT		
1	17504-ZM3-003	GROMMET, FUEL TUBE	1			
2	17511-Z0Z-013	TANK, FUEL	1		1032639 S3,SGT3,ST3,TAT3	
	17511-Z6K-801		1		1114890 SATM,SGT9,STSC	
	17511-Z6K-820		1		1267233 ST3E	
			1		1269049 TTSC	
	17511-Z6K-801		1	1032640	1114890 S3,SGT3,ST3,TAT3	
	17511-Z6K-820		1	1114891	1267233 S3,SATM,SGT3,SGT9,ST3,TAT3	
			1	1114891	1269049 STSC	
	17511-Z6K-821		1	1267234	S3,SATM,SGT3,SGT9,ST3,ST3E,TAT3	
			1	1269050	STSC,TTSC	
3	17511-Z6K-811	TANK, FUEL	1		TAR	
	17511-Z6K-003		1	1021964	T3,TMS3,TR3	
	17511-Z6K-810		1	1266737	T4,TMMS	
	17511-Z6K-013		1	1021965	1116490 T3,TMS3,TR3	
	17511-Z6K-810		1	1116491	1266737 T3,TMS3,TR3	
	17511-Z6K-811		1	1266738	T3,T4,TMMS,TMS3,TR3	
4	17519-ZM5-003	FITTING	2		T3,T4,TMS3,TR3	
	17519-Z6J-003	JOINT, FUEL TANK	2		TAR,TMMS	
5	17533-Z0H-000	RUBBER, TANK MOUNTING	4			
6	17555-Z0Z-000	GUARD, TANK	1		SGT3,SGT9,ST3,ST3E,STSC	
7	17620-ZM3-817	CAP ASSY., FUEL TANK	1		S3,SATM,SGT3,SGT9,ST3,ST3E,STSC,TAT3,TTSC	
8	17672-Z0H-003	FILTER, FUEL	1			
10	17701-Z6K-881	TUBE, FUEL(FKM)	1		TAR	
	17701-Z6J-003	TUBE, FUEL	1		TMMS	
	17701-Z6K-003		1		1186694 T3,T4,TMS3,TR3	
	17701-Z6J-003		1	1186695	T3,T4,TMS3,TR3	

E-17

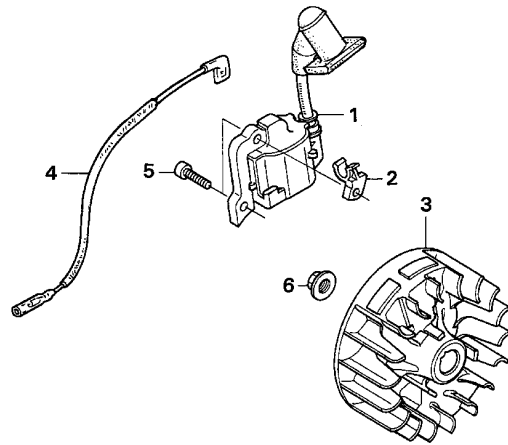
FUEL TANK

Ref. No.	Part No.	Description	Reqd. QTY		Serial No.	Parts catalogue code
			GX	NT		
11	17702-Z0Z-000	TUBE, FUEL RETURN	1	-----	1185088	STSC
			1	-----	1185256	S3,SATM,SGT3,SGT9,ST3,ST3E,TAT3
12	17702-Z6K-003	TUBE, FUEL RETURN	1	-----	-----	T3,T4,TAR, TMMS, TMS3, TR3
13	17703-Z6K-003	TUBE A, FUEL	1	-----	-----	T3,T4,TAR, TMMS, TMS3, TR3
14	90010-Z0H-003	BOLT, SOCKET, 5X30	2	-----	-----	SGT3,SGT9,ST3,ST3E,STSC
15	90018-Z0H-003	BOLT, SOCKET, 5X16	2	-----	-----	SGT3,SGT9,ST3,ST3E,STSC
16	91401-ZM3-003	CLIP, TUBE	2	-----	-----	S3,SATM,SGT3,SGT9,ST3,ST3E,STSC,TAR,TAT3, TMMS, TTSC
			4	-----	1186694	T3,T4, TMS3, TR3
			2	-----	1186695	T3,T4, TMS3, TR3
17	91501-Z0H-000	COLLAR, TANK GUARD	2	-----	-----	SGT3,SGT9,ST3,ST3E,STSC
18	91506-ZM3-000	COLLAR A, HEAD COVER	2	-----	-----	SGT3,SGT9,ST3,ST3E,STSC
19	16865-Z6J-800	PROTECTOR, TUBE	1	-----	1185088	STSC
22	16865-Z6K-000	PROTECTOR, TUBE	1	-----	-----	TAR, TMMS, TTSC
			1	-----	1185089	STSC
			1	-----	1185257	S3,SATM,SGT3,SGT9,ST3,ST3E,TAT3
			1	-----	1186695	T3,T4, TMS3, TR3
23	17519-Z6J-003	JOINT, FUEL TANK	1	-----	-----	TTSC
			1	-----	1185089	STSC
			1	-----	1185257	S3,SATM,SGT3,SGT9,ST3,ST3E,TAT3
24	17701-Z6J-003	TUBE, FUEL	1	-----	-----	TTSC
			1	-----	1185089	STSC
			1	-----	1185257	S3,SATM,SGT3,SGT9,ST3,ST3E,TAT3
25	17702-Z0H-003	TUBE, FUEL RETURN	1	-----	-----	TTSC
			1	-----	1185089	STSC
			1	-----	1185257	S3,SATM,SGT3,SGT9,ST3,ST3E,TAT3
26	17703-Z6K-801	TUBE A, FUEL	1	-----	-----	TTSC
			1	-----	1185089	STSC
			1	-----	1185257	S3,SATM,SGT3,SGT9,ST3,ST3E,TAT3
27	90601-Z6J-003	CLAMP, TUBE	2	-----	-----	TAR, TMMS, TTSC
			2	-----	1185089	STSC
			2	-----	1185257	S3,SATM,SGT3,SGT9,ST3,ST3E,TAT3
			2	-----	1186695	T3,T4, TMS3, TR3
28	17620-Z0H-J72	CAP ASSY., FUEL TANK	1	-----	-----	T3,T4,TAR, TMMS, TMS3, TR3
29	17700-Z0Z-305	GROMMET ASSY., FUEL TANK	1	-----	1185088	STSC
			1	-----	1185256	S3,SATM,SGT3,SGT9,ST3,ST3E,TAT3
30	17504-ZM3-003	GROMMET, FUEL TUBE	(1)	-----	1185088	STSC
			(1)	-----	1185256	S3,SATM,SGT3,SGT9,ST3,ST3E,TAT3
31	17519-ZM5-003	FITTING	(1)	-----	1185088	STSC
			(1)	-----	1185256	S3,SATM,SGT3,SGT9,ST3,ST3E,TAT3
32	17701-Z0Z-800	TUBE COMP., FUEL FEED	(1)	-----	1185088	STSC
			(1)	-----	1185256	S3,SATM,SGT3,SGT9,ST3,ST3E,TAT3
33	17703-Z6K-801	TUBE A, FUEL	(1)	-----	1185088	STSC
			(1)	-----	1185256	S3,SATM,SGT3,SGT9,ST3,ST3E,TAT3
34	91401-ZM3-003	CLIP, TUBE	(2)	-----	1185088	STSC
			(2)	-----	1185256	S3,SATM,SGT3,SGT9,ST3,ST3E,TAT3



E-19

FLYWHEEL



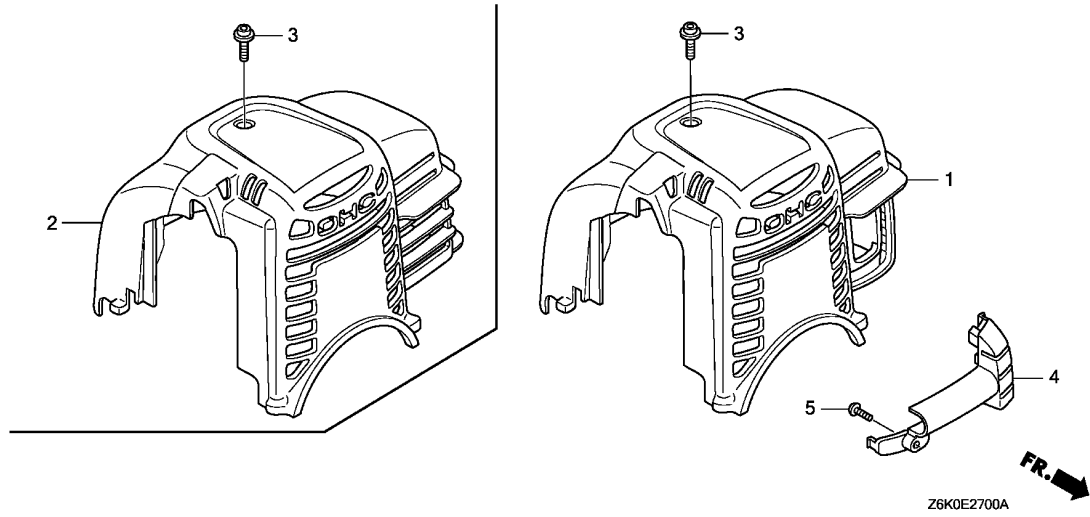
Z6K0-E1900

Ref. No.	L.O.N. (Relative ref. Number)	Description	F.R.T.
----------	-------------------------------	-------------	--------

Ref. No.	Part No.	Description	Reqd. QTY		Serial No.	Parts catalogue code
			GX	NT		
1	30500-Z3F-003	COIL ASSY., IGNITION	1	-----	-----	S3,SATM,SGT3,SGT9,ST3,STSC,T3,TAT3,TMS3,TR3
	30500-Z3F-013	1	-----	-----	ST3E,T4,TAR, TMMS, TTSC
2	30522-Z3F-000	CLIP, HIGH TENSION CORD	1	-----	-----	
3	31110-Z3F-003	FLYWHEEL COMP.	1	-----	-----	
4	32195-Z0Z-000	CORD, STOP SWITCH	1	-----	-----	
5	90012-Z3E-003	BOLT, SOCKET, 4X14	2	-----	-----	SATM,SGT9,ST3E,STSC,T4,TAR, TMMS, TTSC
	90012-Z0H-005	2	-----	1002284	S3,SGT3,ST3,T3,TAT3,TMS3,TR3
	90012-Z3E-003	2	1002285	-----	S3,SGT3,ST3,T3,TAT3,TMS3,TR3
6	94050-08000	NUT, FLANGE, 8MM	1	-----	-----	

E-27

TOP COVER



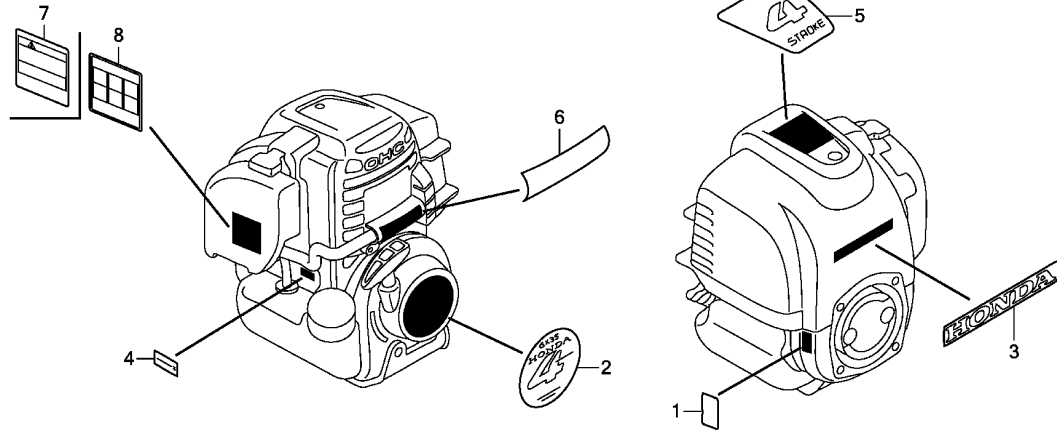
Ref. No. L.O.N. (Relative ref. Number) Description F.R.T.

Ref. No.	Part No.	Description	Reqd. QTY		Serial No.	Parts catalogue code
			GX	NT		
1	19720-Z0Z-000ZA	COVER COMP., TOP	1			
	R280POWER RED	1		S3,ST3	
	19720-Z0Z-000ZB	*T92*.....STIGA YELLOW	1		SGT3	
	19720-Z0Z-000ZC	*T100*.....EMAK RED	1		SGT9	
	19720-Z0Z-000ZD	*T101*.....EMAK ORANGE	1		SGT9	
	19720-Z0Z-000ZF	*T103*.....ELMOS BLUE	1		ST3E	
	19720-Z6K-800	1		STSC	
2	19720-Z3F-800ZA	COVER COMP., TOP	1			
	R280POWER RED	1		SATM,T3,T4,TAR,TAT3,MMMS,TMS3,TR3,TTSC	
	19720-Z3F-800ZB	*NH1*.....BLACK	1		T3	
3	90015-Z0H-003	BOLT, TOP COVER	1		S3,SATM,SGT3,SGT9,ST3,ST3E,STSC,T3,T4,TAT3,TMS3,TR3,TTSC	
	90015-Z3E-900	1		TAR,MMMS	
4	17244-Z6K-800	DUCT, HOT AIR	1		STSC,TTSC	
5	93913-24120	SCREW, TAPPING, 4X10	1		STSC,TTSC	



E-28

LABEL



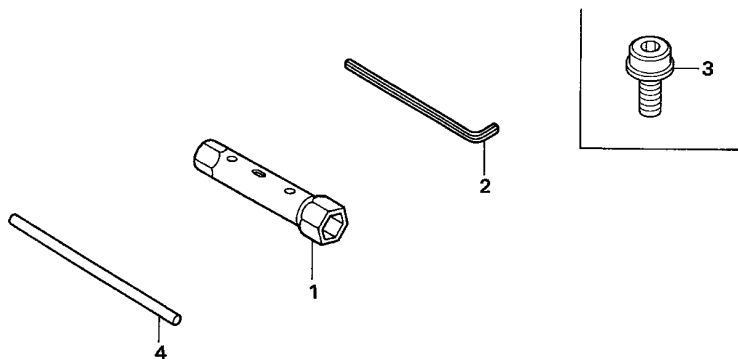
Z6K0E2800C

Ref. L.O.N. (Relative ref. Number) F.R.T.
No. Description

Ref. No.	Part No.	Description	Reqd. QTY	Serial No.	Parts catalogue code
			GX 35 NT		
1	87114-Z3E-000	LABEL, WARNING (NOT CERTIFIED FOR SALE)	1		
2	87521-Z3F-010	MARK, EMBLEM	1	-----	SATM,ST3E,STSC,T4,TAR,TTMS,TTSC
	87521-Z3F-000	1	1041877	S3,SGT3,ST3,T3,TAT3,TMS3,TR3
	87521-Z3F-010	1	1041878	S3,SGT3,ST3,T3,TAT3,TMS3,TR3
3	87531-Z0Z-000	MARK, HONDA	1	-----	S3,SATM,ST3,STSC,T3,T4,TAR,TAT3,TTMS,TMS3,TR3,TTSC
4	87601-Z4A-000	MARK, TYPE(S3)	1	-----	S3
	87601-ZM5-V60	MARK, TYPE(SATM)	1	-----	SATM
	87601-Z4A-820	MARK, TYPE(SGT3)	1	-----	SGT3
	87601-Z4A-850	MARK, TYPE(SGT9)	1	-----	SGT9
	87601-Z4A-800	MARK, TYPE(ST3)	1	-----	ST3
	87601-Z4A-860	MARK, TYPE(ST3E)	1	-----	ST3E
	87601-Z6J-800	MARK, TYPE(STSC)	1	-----	STSC
	87601-Z4A-830	MARK, TYPE(T3)	1	-----	T3
	87601-Z4A-880	MARK, TYPE(T4)	1	-----	T4
	87601-Z6K-V40	MARK, TYPE(TAR)	1	-----	TAR
	87601-Z6K-810	MARK, TYPE(TAT3)	1	-----	TAT3
	87601-Z6K-V30	MARK, TYPE(TMMS)	1	-----	TMMS
	87601-Z6K-000	MARK, TYPE(TMS3)	1	-----	TMS3
	87601-Z6K-800	MARK, TYPE(TR3)	1	-----	TR3
	87601-Z6K-V90	MARK, TYPE(TTSC)	1	-----	TTSC
5	87660-Z0Z-000	MARK(4-STROKE)	1	-----	S3,SATM,SGT3,ST3,ST3E,STSC,T3,T4,TAR,TAT3,TTMS,TMS3,TR3,TTSC
6	87538-Z3E-810	LABEL, OPERATOR NOTICE	1	-----	STSC,TTSC
7	87516-Z6J-000	MARK, OPERATOR CAUTION (ENGLISH)	1	-----	TTMS,TTSC
8	87519-Z6J-000	MARK, OPERATOR CAUTION (PICTOGRAPH)	1	-----	ST3E,T4,TAR

E-29

TOOL



Z6K0-E2900

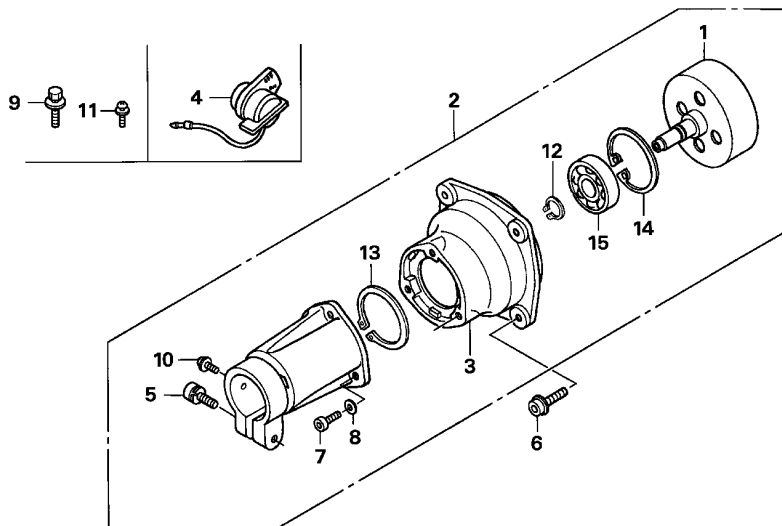
Ref. No.	L.O.N.	(Relative ref. Number)	Description	F.R.T.
----------	--------	------------------------	-------------	--------

Ref. No.	Part No.	Description	Reqd. QTY	Serial No.	Parts catalogue code
1	89216-VJ3-J10	WRENCH, PLUG(16X19)	GX 35 NT (1)		
2	89221-KW3-000	WRENCH, HEX., 4MM	(1)		
3	90011-Z0H-811	BOLT, SOCKET, 5X9	(1)		
4	99005-01000	BAR A, HANDLE	(1)		

2

E-40

OTHER PARTS(1)



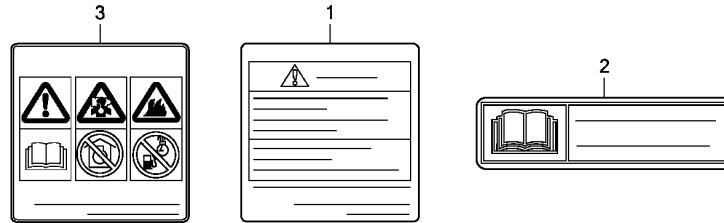
Z6K0-E4000

Ref. No.	L.O.N. (Relative ref. Number)	Description	F.R.T.
----------	-------------------------------	-------------	--------

Ref. No.	Part No.	Description	Reqd. QTY	Serial No.	Parts catalogue code
			GX 35 NT		
1	22100-VL6-H31	OUTER COMP., CLUTCH	1	-----	TMMS
	22100-VK4-M00	1	-----	TMS3
2	22260-VK4-M03	HOUSING ASSY., CLUTCH	1	-----	TMMS
	22260-VK4-M01	1	-----	TMS3
3	22261-VL6-H31	HOUSING A, CLUTCH	1	-----	TMMS
	22261-VK4-003	HOUSING, CLUTCH	1	-----	TMS3
4	35120-Z0D-V81	SWITCH ASSY., ENGINE STOP ..	1	-----	TMMS
	36100-ZE1-015	1	1105968	TMS3
	35120-Z0D-V81	1	1105969	TMS3
5	90101-VK4-003	BOLT, SOCKET, 6X20	1	-----	TMMS,TMS3
6	90102-VK4-000	BOLT, FLANGE SOCKET, 6X20 ...	4	-----	TMMS,TMS3
7	90103-VK4-003	BOLT, SOCKET, 5X20	3	-----	TMMS,TMS3
8	90401-VK4-003	WASHER, 5MM	3	-----	TMMS,TMS3
9	93403-06028-08	BOLT-WASHER, 6X28	1	-----	TMMS,TMS3
10	93892-05010-07	SCREW-WASHER, 5X10	1	-----	TMMS,TMS3
11	93893-05010-08	SCREW-WASHER, 5X10	1	-----	TMMS,TMS3
12	94510-15000	CIRCLIP, EXTERNAL, 15MM	1	-----	TMMS,TMS3
13	94510-30000	CIRCLIP, EXTERNAL, 30MM	1	-----	TMMS,TMS3
14	94520-35000	CIRCLIP, INTERNAL, 35MM	1	-----	TMMS,TMS3
15	96130-62020-10	BEARING, RADIAL BALL, 6202 ..	1	-----	TMMS,TMS3

E-40-1

OTHER PARTS(2)



Z6K0E4001B

Ref. L.O.N. (Relative ref. Number) F.R.T.
No. Description

Ref. No.	Part No.	Description	Reqd. QTY	Serial No.	Parts catalogue code
			GX 35 NT		
1	87516-Z6J-000	MARK, OPERATOR CAUTION (ENGLISH)	1	-----	----- ST3E,T4,TAR
	87516-Z6J-800	MARK, OPERATOR CAUTION(FRENCH)	1	-----	----- ST3E,T4,TAR,TTMS,TTSC
2	87522-ZK6-800	LABEL, CAUTION(CHINA)	1	1189623	----- S3
3	87519-Z6J-000	MARK, OPERATOR CAUTION (PICTOGRAPH)	1	-----	----- TTMS,TTSC



PART NAME INDEX

Part name	Page	Ref.	Part name	Page	Ref.	Part name	Page	Ref.
[A]						[H]		
ARM, EX. VALVE ROCKER	11	7	CLUTCH ASSY.	16	2	HOUSING ASSY., CLUTCH.....	28	2
ARM, IN. VALVE ROCKER	11	6	COIL ASSY., IGNITION	24	1	HOUSING A, CLUTCH.....	28	3
ARM, SWING	15	8	COLLAR	15	13	HOUSING, CLUTCH.....	28	3
ARRESTER COMP., SPARK	21	2	COLLAR A, HEAD COVER	15	14			
				19	9			
				21	10			
				23	18			
[B]			COLLAR, AIR CLEANER	19	8	[J]		
BAR A, HANDLE	27	4	COLLAR, AIR CLEANER CASE	19	7	JET.....	18	30
BEARING, RADIAL BALL, 6202 ...	28	15		20	8	JOINT, FUEL TANK.....	22	4
BELT, TIMING	14	4			9		23	23
BODY ASSY., AIR PURGE	17	6			10	JOINT, HOT AIR.....	19	12
BODY ASSY., PUMP	17	5	COLLAR, TANK GUARD	23	17			
BOLT-WASHER, 6X28	28	9	CORD, STOP SWITCH	24	4	[K]		
BOLT, 5X53	18	26	COVER COMP., CYLINDER HEAD ...	11	2			
BOLT, 5X58	18	26	COVER COMP., TOP	25	1	KNOB, RECOIL STARTER.....	15	9
BOLT, CLUTCH	16	3			2			
BOLT, FLANGE SOCKET, 6X20 ...	28	6	COVER, AIR CLEANER	19	3	[L]		
BOLT, SOCKET, 4X14	24	5		20	4	LABEL, CAUTION.....	29	2
BOLT, SOCKET, 5X12	12	21	COVER, FAN	16	1	LABEL, OPERATOR NOTICE.....	26	6
BOLT, SOCKET, 5X16	15	12	COVER, PRIMER PUMP	17	15	LABEL, WARNING.....	26	1
	18	27	CRANKCASE SET	11	1	LEVER, METERING.....	17	12
	19	5	CRANKSHAFT COMP.	13	4	LIFTER COMP., EX. VALVE.....	11	9
	20	6			7	LIFTER COMP., IN. VALVE.....	11	8
	21	7	[D]					
	23	15	DIAPHRAGM ASSY., METERING	17	3	[M]		
BOLT, SOCKET, 5X20	11	16	DIAPHRAGM, PUMP	17	4	MARK.....	26	5
	16	6	DUCT, HOT AIR	25	4	MARK, EMBLEM.....	26	2
	28	7				MARK, HONDA.....	26	3
BOLT, SOCKET, 5X25	19	4	[E]			MARK, OPERATOR CAUTION.....	26	7
	20	5	ELEMENT, AIR CLEANER	19	1			8
	23	14		20	2			1
BOLT, SOCKET, 5X30	11	17	[F]			MARK, TYPE.....	26	4
BOLT, SOCKET, 5X32	11	17	FILTER, BREATHER	11	5	MUFFLER COMP.	21	1
BOLT, SOCKET, 5X9	27	3	FILTER, EXHAUST	21	3	[N]		
BOLT, SOCKET, 6X20	28	5	FILTER, FUEL	22	8	NUT, FLANGE, 5MM.....	19	6
BOLT, STUD, 5X56.5	21	6	FILTER, FUEL INLET	18	22		20	11
BOLT, TOP COVER	25	3	FITTING	22	4	NUT, FLANGE, 8MM.....	24	6
			FLYWHEEL COMP.	23	31	NUT, SELF-LOCK, 5MM.....	21	9
				24	3	NUT, TAPPET ADJUSTING.....	12	22
[C]								
CAP ASSY., FUEL TANK	22	7				[O]		
	23	28	GASKET, METERING DIAPHRAGM ...	17	1	OIL SEAL, 10X20X5.....	13	5
CAP ASSY., OIL FILLER	11	12	GASKET, PUMP	17	2	OIL SEAL, 15X25X6.....	13	6
CARBURETOR ASSY.	18	23	GROMMET ASSY., FUEL TANK	23	29	O-RING	17	14
CASE COMP., AIR CLEANER	19	2	GROMMET, FUEL TUBE	22	1	O-RING, 12.3X2.4.....	18	29
	20	3		23	30	O-RING, 14.8X2.4.....	18	28
CASE, RECOIL STARTER	15	2	GROMMET, HEAD COVER	11	4	OUTER COMP., CLUTCH.....	28	1
		3	GUARD, TANK	22	6			
CIRCLIP, EXTERNAL, 15MM	28	12	GUIDE COMP., UNDER AIR	21	5	[P]		
CIRCLIP, EXTERNAL, 30MM	28	13	GUIDE, AIR	21	4	PACKING, CARBURETOR.....	18	24
CIRCLIP, INTERNAL, 35MM	28	14	GUIDE, ROPE	15	5	PACKING, OIL FILLER CAP.....	11	13
CLAMP, TUBE	12	24						
		25						
		27						
CLIP, HIGH TENSION CORD	24	2						
CLIP, TUBE	19	10						
	23	16						
		34						

PART NAME INDEX

Part name	Page	Ref.	Part name	Page	Ref.	Part name	Page	Ref.
PIN, METERING LEVER	17	11	TUBE, FUEL	22	10			
PIN, PISTON	13	3		23	24			
PIN, SPRING, 4X10	12	23	TUBE, FUEL RETURN	23	11			
PISTON	13	2			12			
PLATE ASSY., OIL OUTLET VALVE	11	11			25			
PLATE, OIL TRAP	20	1	TUBE, HOT AIR	19	11			
PLUG, SPARK	11	15	TUBE, OIL	11	10			
PROTECTOR, TUBE	23	19						
		22	[V]					
PULLEY COMP., CAMSHAFT	14	3	VALVE, EX.	14	6			
PULLEY, RECOIL STARTER	15	7	VALVE, INLET NEEDLE	17	8			
PUMP, PRIMER	18	21	VALVE, IN.	14	5			
[R]			[W]					
REEL, RECOIL STARTER	15	4	WASHER	17	20			
RETAINER, VALVE SPRING	14	8	WASHER, 5MM	28	8			
RING SET, PISTON	13	1	WASHER, CLUTCH	16	4			
RING, RETAINING	17	13	WASHER, WAVE	16	5			
ROLLER, 4X31.8	14	2	WRENCH, HEX., 4MM	27	2			
ROPE, RECOIL STARTER	15	10	WRENCH, PLUG	27	1			
RUBBER, TANK MOUNTING	22	5						
[S]								
SCREEN, INLET	17	7						
SCREW-WASHER, 5X10	28	10						
		11						
SCREW, METERING LEVER PIN	17	10						
SCREW, PAN, 4X8	11	18						
		19						
SCREW, PUMP COVER	17	18						
SCREW, SETTING	15	11						
SCREW, SPECIAL, 6X16	20	7						
SCREW, TAPPET ADJUSTING	12	20						
SCREW, TAPPING, 4X10	25	5						
SCREW, TAPPING, 4X6	21	8						
SCREW, THROTTLE COLLAR	17	17						
SEAL, HEAD COVER	11	3						
SEAL, VALVE STEM	14	1						
SHROUD	18	25						
SPRING, METERING LEVER	17	9						
SPRING, PUMP	17	19						
SPRING, RECOIL STARTER	15	6						
SPRING, VALVE	14	7						
STARTER ASSY., RECOIL	15	1						
SWITCH ASSY., ENGINE STOP	28	4						
SWIVEL	17	16						
[T]								
TANK, FUEL	22	2						
		3						
TUBE A, FUEL	23	13						
		26						
		33						
TUBE COMP., FUEL FEED	23	32						
TUBE, BREATHER	11	14						

1

FOREWORD INDEX

2

ENGINE GROUP

3

PART NUMBER INDEX

4

PART NAME INDEX

HONDA
The Power of Dreams